

NOTE:

SIDE 2: KABELLISTE

SIDE 2-3: MÅLSKITSER

SIDE 4-15: KREDSSKEMA

Udgave	Tekst	Dato	Initialer	Kontr.	Godkendt
a	SOM UDFØRT. UDSKIFTNING AF AC/DC DREV	01.07.11	JU	HØJ	KH

Bygherre:



Centralkommunernes Transmissionsselskab I/S

STÆHR JOHANSENSVEJ 38 POSTBOX 9 DK 2000 FREDERIKSBERG TLF. 38185777 FAX 38185799

Projekt:

Centralkommunernes Kraftvarmeforsyning

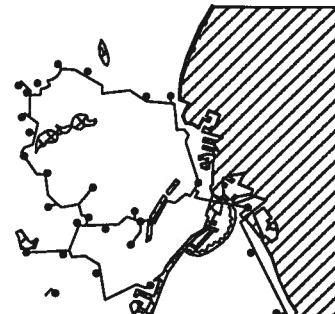
Projektet:

SØNDERENGEN

350

Tegningsbetegnelse:

SPIDSLASTANLÆG NYBROVEJ
BETJENINGS- OG UPS-TAVLE
KREDSSKEMA



Målførhold:

Tegnings format:

297 x 210

Sags nr.:

8117

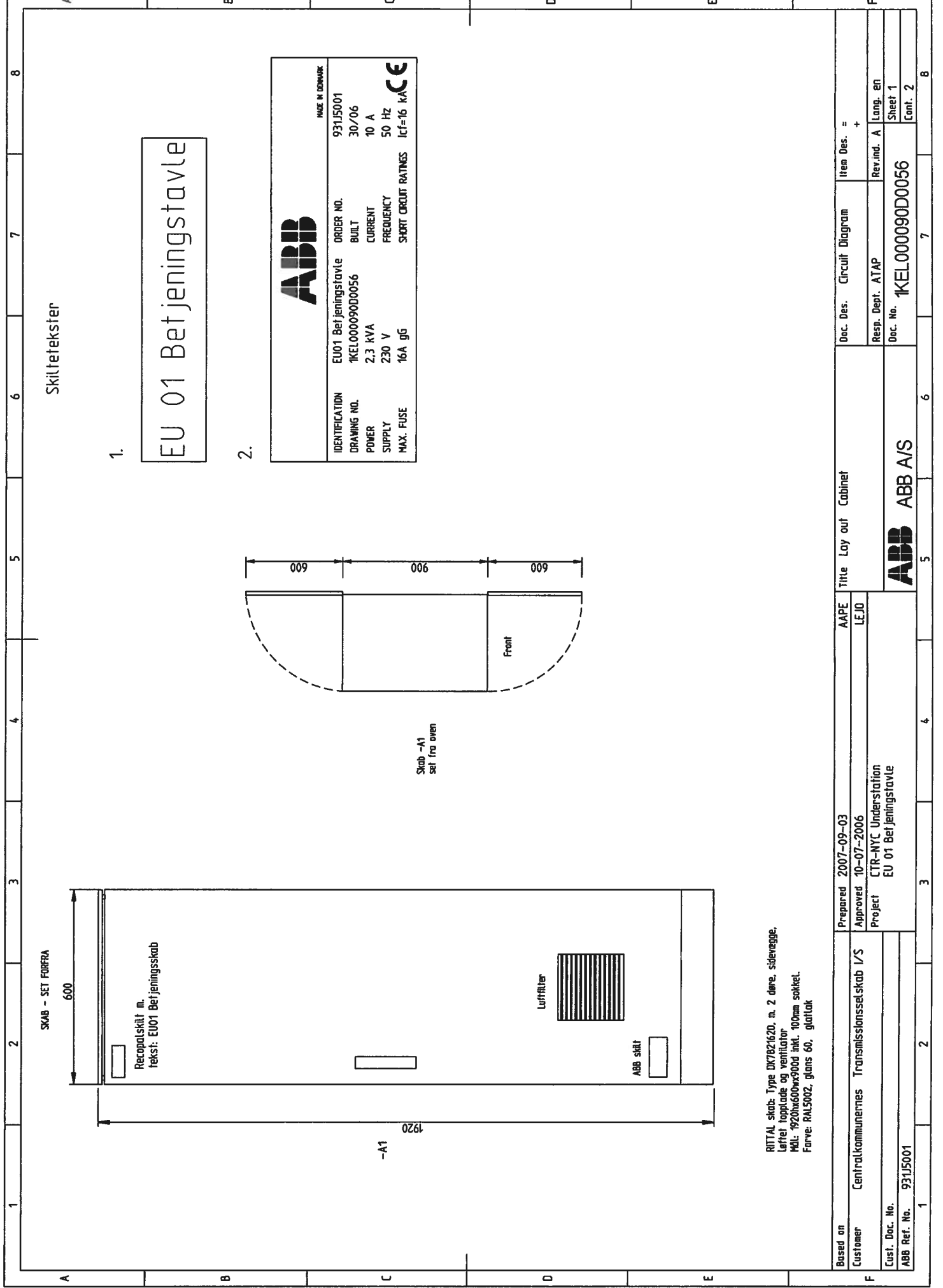
Tegnings nr.:

35080 H321 a

Rådgiver:



Hannemanns Alle 53 Telefon 51 61 10 00
2300 København S Telefax 51 61 10 01
Danmark



Skiltetekster

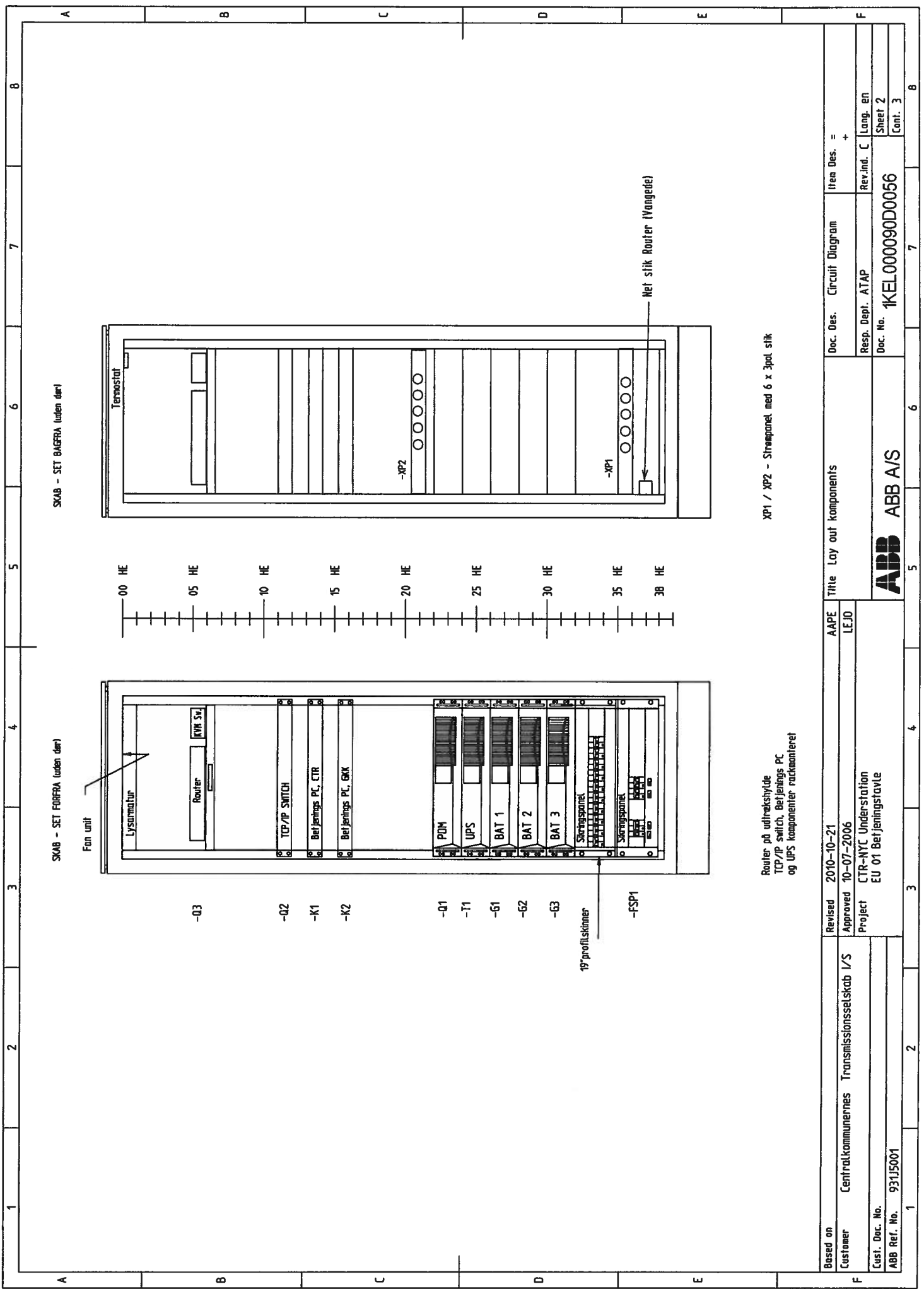
1. EU 01 Betjeningsstavle

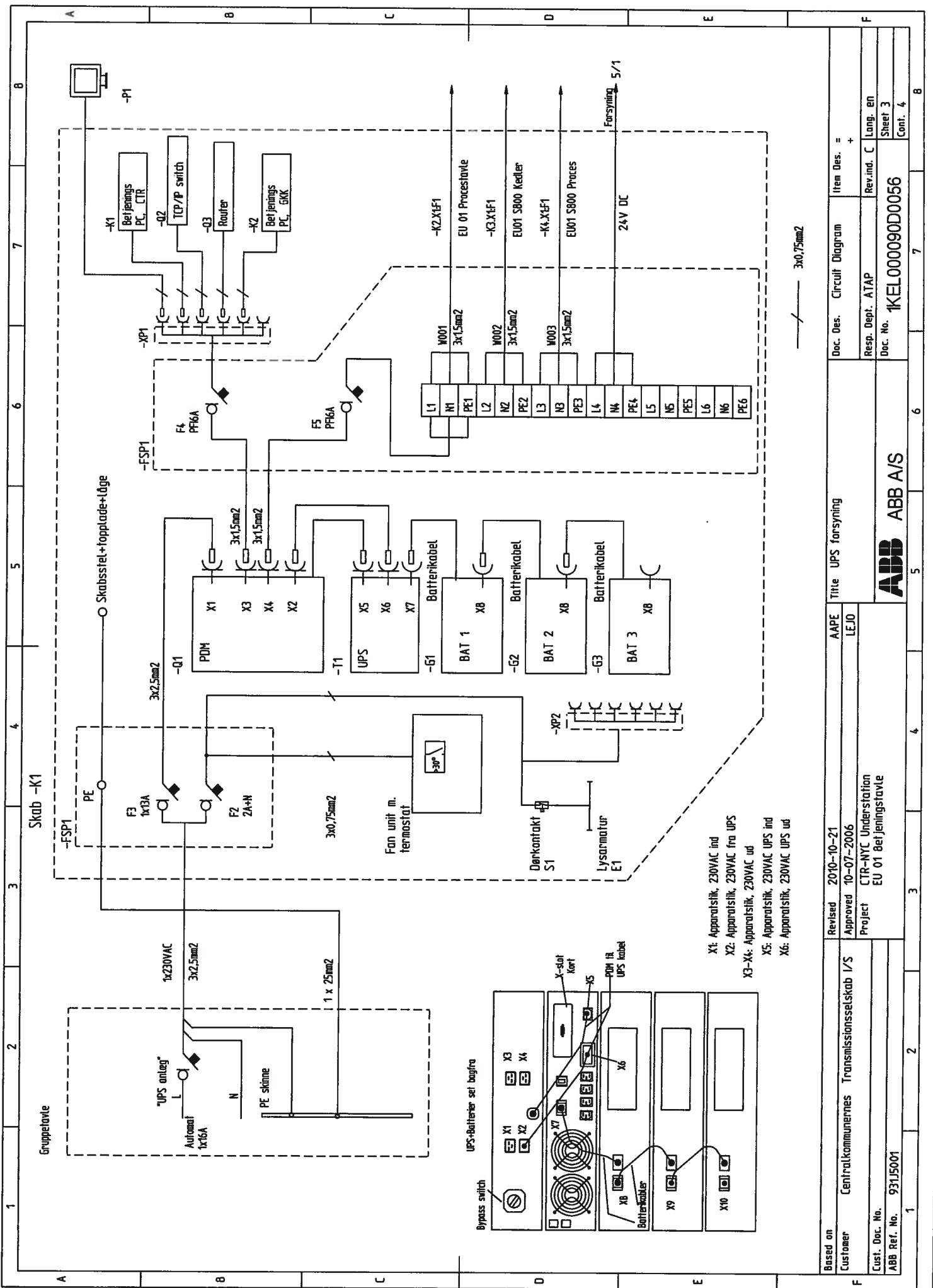
2.

ABB		<small>MADE IN DENMARK</small>	
IDENTIFICATION	EU01 Betjeningsstavle	ORDER NO.	931J5001
DRAWING NO.	1KEL000090D0056	BUILT	30/06
POWER	2,3 kVA	CURRENT	10 A
SUPPLY	230 V	FREQUENCY	50 Hz
MAX. FUSE	16A gG	SHORT CIRCUIT RATINGS	Icf=16 kACE

RITTAL skab: Type DK78Z162D, m. 2 døre, siderægge,
 Løftet topplade og ventilator
 Mål: 1920h x 600w x 300d inkl. 100mm sokkel.
 Farve: RAL5002, glans 60, gløttak

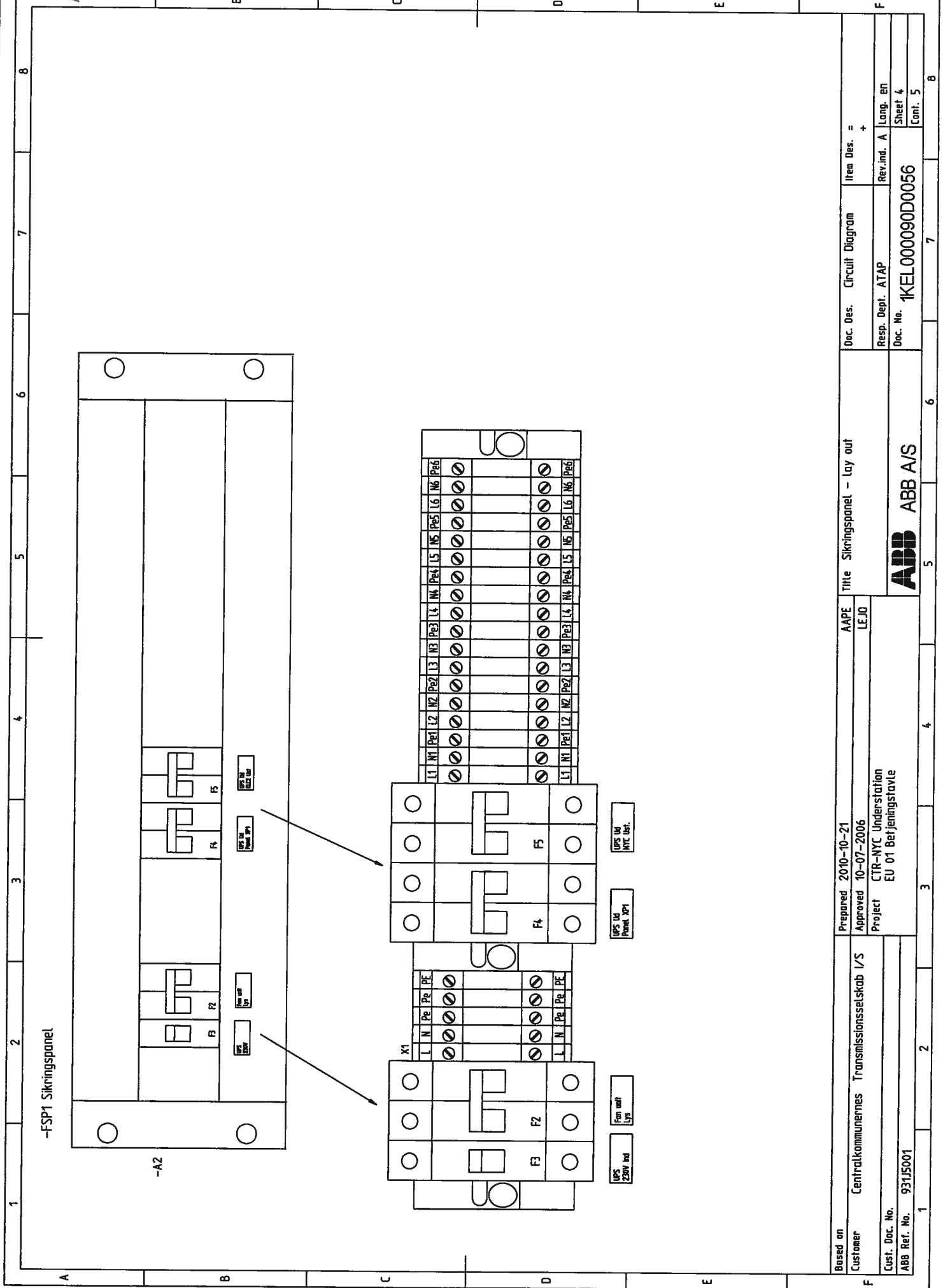
Based on	Prepared	AAPE	Titte Lay out Cabinet	Doc. Des.	Circuit Diagram	Item Des. =
Customer	Approved	LEJO		Resp. Dept.	ATAP	Rev. md. A
	Project	CTR-NYC Understation		Doc. No.	1KEL000090D0056	Lang. en
Cust. Doc. No.						Sheet 1
ABB Ref. No.	931J5001					Cont. 2





- X1: Apparatstik, 230VAC ind
- X2: Apparatstik, 230VAC fra UPS
- X3-X4: Apparatstik, 230VAC ud
- X5: Apparatstik, 230VAC UPS ind
- X6: Apparatstik, 230VAC UPS ud

Based on	Revised	Title		Doc. Des.	Item Des.
Customer	2010-10-21	UPS forsyning		Circuit Diagram	= +
Customer	Approved	AAPE		Resp. Dept.	Rev.ind.
	10-07-2006	LEJD		ATAP	C
Cust. Doc. No.	Project	ABB A/S		Doc. No.	Lang. En
931J5001	CTR-NYC Understation			1KEL00009D0056	Sheet 3
	EU 01 Betjeningsstavle				Cont. 4

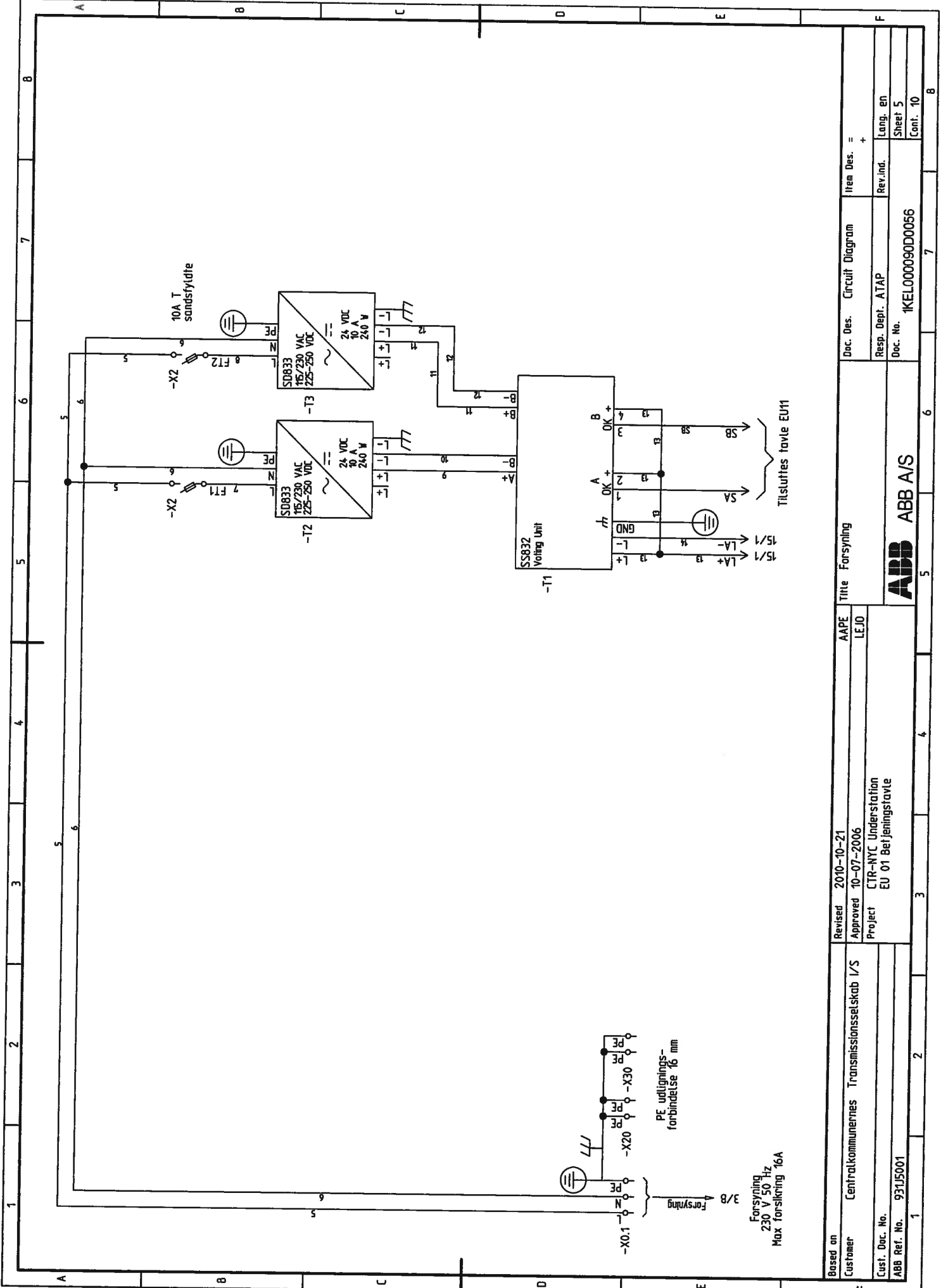


-FSP1 Sirkingspanel

Based on	Prepared 2010-10-21	AAPE	Title Sirkingspanel - lay out	Doc. Des.	Circuit Diagram	Item Des. =
Customer	Approved 10-07-2006	LEJO		Resp. Dept.	ATAP	Rev.ind. A
Cust. Doc. No.	Project	CTR-NYC Understratjon		Doc. No.	1KEL000090D0056	Long. EN
ABB Ref. No.	EU 01 Berjeningstavle					Sheet 4
						Cont. 5



ABB A/S



Based on	Revised	2010-10-21	AAPE	Title	Forsyning	Doc. Des.	Circuit Diagram	Item Des.	= +
Customer	Centrakommunes Transmissionselskab I/S	Approved	10-07-2006	LEJO		Resp. Dept.	ATAP	Rev.ind.	Lang. en
Cust. Doc. No.		Project	CTR-NYC Understation			Doc. No.	IKEL000090D0056		Sheet 5
ABB Ref. No.	931J5001		EU 01 Betjeningsstavle						Cont. 10



ABB A/S

Tilsluttes tavle EU11

PE udligtningsforbindelse 16 mm

Forsyning
3/B
230 V 50 Hz
Max forsikring 16A

10A T sandsfyldte

S5832 Voltage Unit

SD833
115/230 VAC
225-250 VDC
24 VDC
10 A
240 W

SD833
115/230 VAC
225-250 VDC
24 VDC
10 A
240 W

-X2

-X2

-X0.1

PE

PE

PE

PE

PE

PE

PE

PE

PE

PE

PE

PE

PE

PE

PE

PE

PE

PE

PE

PE

PE

PE

PE

PE

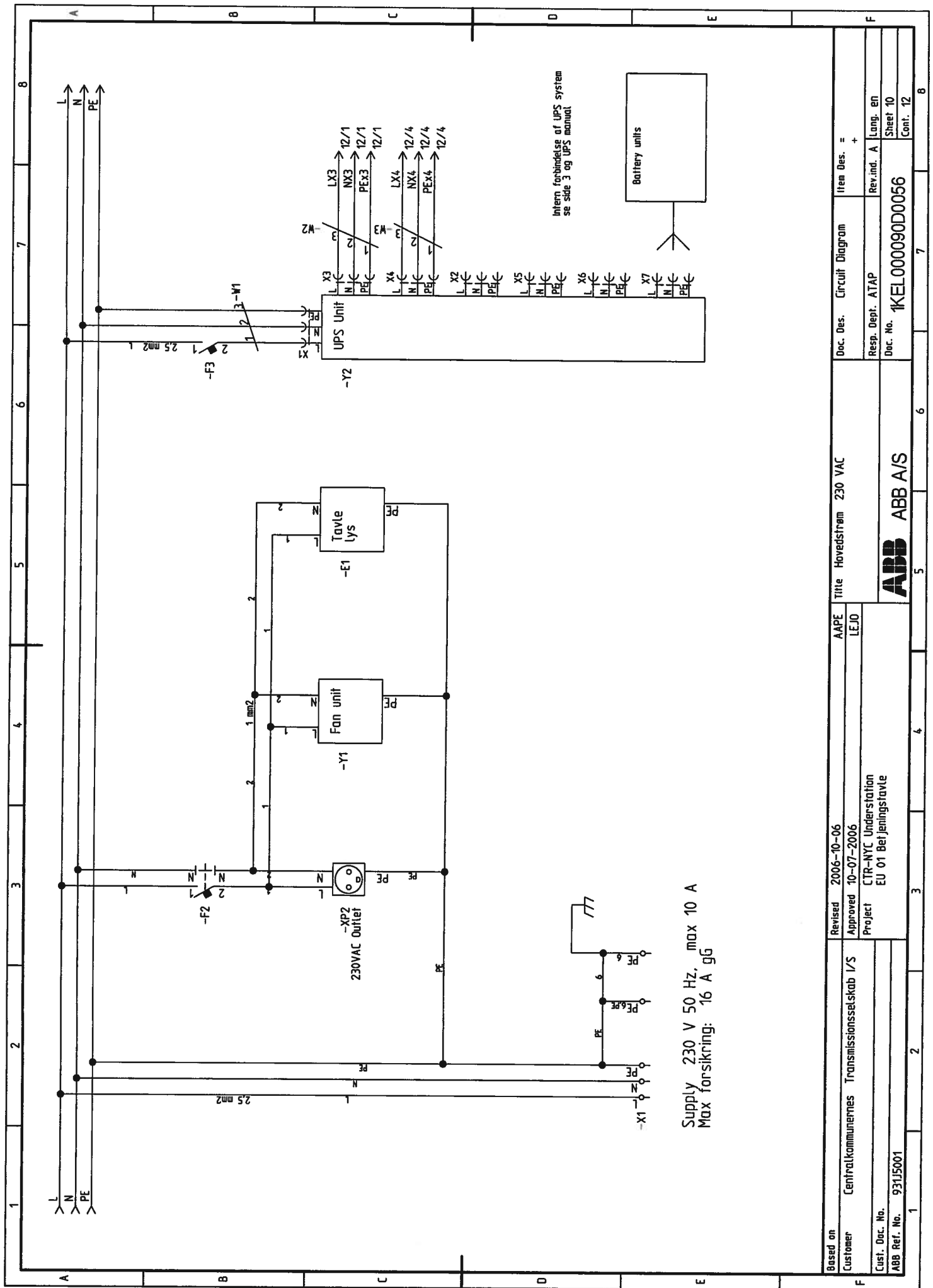
PE

PE

PE

PE

PE



Supply 230 V 50 Hz, max 10 A
Max forsikring: 16 A gG

Intern forbindelse af UPS system
se side 3 og UPS manual

Based on	Revised	2006-10-06	AAPE	Title	Hovedstrøm 230 VAC	Doc. Des.	Circuit Diagram	Item Des.	= +
Customer	Approved	10-07-2006	LEJO			Resp. Dept.	ATAP	Rev.ind.	A
	Project	CTR-NYC Understation							Lang. EN
Cust. Doc. No.		EU 01 Betjeningsstavle				Doc. No.	1KEL000090D0056		Sheet 10
ABB Ref. No.	931J5001								Cont. 12



ABB A/S

List of Products

Function (=)	Location (+)	Productt (-)	Type	Description	Manufacture	Sheet	Path
		-A1	IT enclosure, complet	Enclosure HxBxD=1800x600x900 (mm) excl. Racksystem	Rittal	1	2
		-A2	7480.035	Power box 1 220 V AC supply on DIN rail	Rittal	4	6
		-E1	IT enclosure light system comp.	Light system complet	Rittal	10	5
		-F2	S 201-C 2 NA	Automatic Circuit breaker, 1 pol.+N, 2A	ABB	10	3
		-F3	S 201-C 13	Automatic Circuit breaker, 1 pol.13A	ABB	10	7
		-F4	DS 951 C 6/0,3	PFI relay 6A, 2 pol. (PFI + CB)	ABB	12	2
		-F5	DS 951 C 6/0,3	PFI relay 6A, 2 pol. (PFI + CB)	ABB	12	5
		-F20	S 202-C 6	Automatic Circuit breaker, 2 pol.6A	ABB	15	2
		-F21	S 202-C 6	Automatic Circuit breaker, 2 pol.6A	ABB	15	2
		-F22	S 202-C 6	Automatic Circuit breaker, 2 pol.6A	ABB	15	3
		-F23	S 202-C 6	Automatic Circuit breaker, 2 pol.6A	ABB	15	3
		-F24	S 202-C 6	Automatic Circuit breaker, 2 pol.6A	ABB	15	4
		-F25	S 202-C 6	Automatic Circuit breaker, 2 pol.6A	ABB	15	5
		-F26	S 202-C 6	Automatic Circuit breaker, 2 pol.6A	ABB	15	5
		-F27	S 202-C 6	Automatic Circuit breaker, 2 pol.6A	ABB	15	6
		-F28	S 202-C 6	Automatic Circuit breaker, 2 pol.6A	ABB	15	6
		-F29	S 202-C 6	Automatic Circuit breaker, 2 pol.6A	ABB	15	7
		-P1	AMT 2/15	Amperemeter for DIN rail 0 - 15 ADC	ABB	15	2
		-T1	SS832	Power Votng Unit for redundant power supply 2x10A	ABB	5	5
		-T2	S0833	Power Supply Device 100-240 VAC / 24VDC 10A	ABB	5	6
		-T3	S0833	Power Supply Device 100-240 VAC / 24VDC 10A	ABB	5	6
		-XP1	7240.370	Power outlets 220 V 2 x 6 pc	Rittal	12	2
		-XP2	7240.370	Power outlets 220 V 2 x 6 pc	Rittal	10	3
		-Y1	IT enclosure fansystem complet	Roof fan system complet	Rittal	10	4
		-Y2	PH9125 3000VA	UPS module	Powerware	10	7

Based on	Prepared	Title List of products	Doc. Des.	List of Products	Item Des. =
Customer	Approved	AAPE			+
Centralkommunernes Transmissionselskab I/S	10-07-2006	LEJO			
Cust. Doc. No.	Project		Resp. Dept.	ATAP	Lang. en
ABB Ref. No. 931J5001	EU 01 Bef Jeningstavle		Doc. No.	1KELO00090D00056	Sheet 1
		ABB ABB A/S			Cont.

List of Parts

Total	Type	Supplier	Description	EAN 13 / Order No.	Manufacture
2.00	10 A 6,3x32 mm slow w. sand				
1.00	AMT 2/15	ABB	Amperemeter for DIN rail 0 - 15 ADC	80 12542 02880 2	ABB
15.00	BAUL	ABB	End stop, screwless, 9 mm	34 72593 994087 / SAP403711	Entrelec
12.00	D2.5/5.ADO	ABB	Terminal block ADO 1mm2 / screw 2.5mm2, Grey	34 72591 995541 / SAP403721	Entrelec
6.00	D2.5/5.P.ADO	ABB	PE Terminal block ADO/screw inlet 2.5mm2, elec. connected to the rail	34 72593 990308 / SAP403683	Entrelec
2.00	DS 951 C 6/0,3	ABB	PFI relay 6A, 2 pol. (PFI + CB)	80 12542 436201	ABB
6.00	FEDA01	ABB	End section for D2.5/5 ADO, Grey, 3mm	34 72591 993363 / SAP403712	Entrelec
1.00	FEM6	ABB	End section for terminal blocks, Grey, 2,8 mm	34 72591 183689 / SAP351606	Entrelec
1.00	M16/12	ABB	Terminal block grey 16 mm2	34 72591 151299 / SAP 351620	Entrelec
5.00	M16/12.P	ABB	PE Terminal block green, yellow 16 mm2	34 72591 651300 / SAP 351627	Entrelec
4.00	M4/6	ABB	Terminal block grey 6 mm2	34 72591 151169 / SAP 351614	Entrelec
2.00	M4/6.P	ABB	PE Terminal block green, yellow 6 mm2	34 72591 651133 / SAP 351629	Entrelec
1.00	S 201-C 13	ABB	Automatic Circuit breaker, 1 pol.13A	40 16779 46430 7	ABB
1.00	S 201-C 2 NA	ABB	Automatic Circuit breaker, 1 pol.-N, 2A	40 16779 53169 6	ABB
10.00	S 202-C 6	ABB	Automatic Circuit breaker, 2 pol.6A	40 16779 46550 2	ABB
2.00	SD833	ABB	Power Supply Device 100-240 VAC / 24VDC 10A	385C610066R1	ABB
1.00	SS832	ABB	Power Voting Unit for redundant power supply 2x10A	385C610068R1	ABB
2.00	UK 10-DREHSI	H. Henniksens Efff.	Fuse Terminal block 10 mm2 max. 10A , fuse 6/6,3x32	SAP3005109	Phoenix
1.00	19" mounting kit	Powerware	0514-1562-0021	19" mounting kit	Powerware
1.00	Modbus adaptor X slot	Powerware	X-slot relay card AS400, Part no : 1018460	Modbus adaptor X slot	Powerware
1.00	PW 9125 BAT	Powerware	Battery module	PH9125BAT, Part no : 103002836-0508090	Powerware
1.00	PH9125 3000VA	Powerware	UPS module	PH9125 3000VA, Part no : 10300277000655080	Powerware
1.00	PH9125bypass	Powerware	By Pass module	PH9125bypass, Part no : 10300271000655080	Powerware
2.00	2423.000	Rittal	Distance clamps IT enclosure roof	2423.000	Rittal
1.00	2514.000	Rittal	Document enclosure	2514.000	Rittal
2.00	4127.000	Rittal	Door Switch with connection cable	4127.000	Rittal
1.00	7063.600	Rittal	Rack profile UPS	7063.600	Rittal
2.00	7109.200	Rittal	Cubicle Light Armature 220 V	7109.200	Rittal
1.00	7145.635	Rittal	Rack profile Shelf 19"	7145.635	Rittal
4.00	7240.370	Rittal	Power outlets 220 V 2 x 6 pc	7240.370	Rittal
Based on					
Customer	Centralkommunernes Transmissionselskab I/S	Prepared	AAPE Title	Doc. Des.	List of Parts
Cust. Doc. No.		Approved	LEJO	Res. Des. =	+
ABB Ref. No.	931J5001	Project	CTR-NYC Understation EU 01 Berjeningsstave	Resp. Dept.	ATAP
				Doc. No.	1KELO00090D00056
				Lang. en	Sheet 1
					Cont. 2



ABB A/S

List of Spare Parts

Function (=)	Location (+)	Product (-)	Type	Total	Supplier	Manufacture	EAN 13 / Order No.
		-A1	7968.035	1	Rittal	Rittal	7968.035
		-A1	7145.635	1	Rittal	Rittal	7145.635
		-A1	7240.370	1	Rittal	Rittal	7240.370
		-A1	8612.090	1	Rittal	Rittal	8612.090
		-A1	TS 8601.605	1	Rittal	Rittal	TS 8601.605
		-A1	TS 8601.095	1	Rittal	Rittal	TS 8601.095
		-A1	7827.180	1	Rittal	Rittal	7827.180
		-A1	SK 3110.000	1	Rittal	Rittal	SK 3110.000
		-A1	7063.600	1	Rittal	Rittal	7063.600
		-A1	7821.620	1	Rittal	Rittal	7821.620
		-A1	SK 3326.207	1	Rittal	Rittal	SK 3326.207
		-A1	7109.200	1	Rittal	Rittal	7109.200
		-A1	4127.000	1	Rittal	Rittal	4127.000
		-A1	2514.000	1	Rittal	Rittal	2514.000
		-A1	2423.000	1	Rittal	Rittal	2423.000
		-A1	7480.035	1	Rittal	Rittal	7480.035
		-A1	TS 8189.235	1	Rittal	Rittal	TS 8189.235
		-A2	7480.035	1	Rittal	Rittal	7480.035
		-E1	7240.370	1	Rittal	Rittal	7240.370
		-E1	4127.000	1	Rittal	Rittal	4127.000
		-E1	7480.035	1	Rittal	Rittal	7480.035
		-E1	7109.200	1	Rittal	Rittal	7109.200
		-F2	S 201-C 2 NA	1	ABB	ABB	40 16779 53169 6
		-F3	S 201-C 13	1	ABB	ABB	40 16779 46430 7
		-F4	DS 951 C 6/0,3	1	ABB	ABB	80 12542 436201
		-F5	DS 951 C 6/0,3	1	ABB	ABB	80 12542 436201
		-F20	S 202-C 6	1	ABB	ABB	40 16779 46550 2
		-F21	S 202-C 6	1	ABB	ABB	40 16779 46550 2
		-F22	S 202-C 6	1	ABB	ABB	40 16779 46550 2
		-F23	S 202-C 6	1	ABB	ABB	40 16779 46550 2

Based on: **Customer** Centralkommunernes Transmissionselskab I/S

Approved: 10-07-2006

Project: CTR-NYC Understation EU 01 Betjeningsstavle

Doc. Des. List of Spare Parts | Item Des. =

Doc. No. 1KEL000090D0056

Rev. Ind. Lang. en

Sheet 1

Cont. 2

ABB ABB A/S

List of Spare Parts

Function (=)	Location (+)	Product (-)	Type	Total	Supplier	Manufacture	EAN 13 / Order No.
		-F24	S 202-C 6	1	ABB	ABB	40 16779 46550 2
		-F25	S 202-C 6	1	ABB	ABB	40 16779 46550 2
		-F26	S 202-C 6	1	ABB	ABB	40 16779 46550 2
		-F27	S 202-C 6	1	ABB	ABB	40 16779 46550 2
		-F28	S 202-C 6	1	ABB	ABB	40 16779 46550 2
		-F29	S 202-C 6	1	ABB	ABB	40 16779 46550 2
		-P1	AMT 2/15	1	ABB	ABB	80 12542 02880 2
		-T1	SS832	1	ABB	ABB	3BSC610068R1
		-T2	SDB33	1	ABB	ABB	3BSC610066R1
		-T3	SDB33	1	ABB	ABB	3BSC610066R1
		-W1					
		-W2					
		-W3					
		-X0.1	M4/6	2	ABB	Entrelec	34 72591 151169 / SAP 351614
		-X0.1	M4/6.P	1	ABB	Entrelec	34 72591 651133 / SAP 351629
		-X0.1	BADL	2	ABB	Entrelec	34 72593 994087 / SAP403711
		-X1	BADL	1	ABB	Entrelec	34 72593 994087 / SAP403711
		-X1	FEM6	1	ABB	Entrelec	34 72591 183689 / SAP351606
		-X1	M4/6.P	1	ABB	Entrelec	34 72591 651133 / SAP 351629
		-X1	M16/12.P	1	ABB	Entrelec	34 72591 651300 / SAP 351627
		-X1	M16/12	1	ABB	Entrelec	34 72591 151299 / SAP 351620
		-X1	M4/6	2	ABB	Entrelec	34 72591 151169 / SAP 351614
		-X2	10 A 6,3x32 mm slow w. sand	2			
		-X2	D2.5/5.A00	12	ABB	Entrelec	34 72591 995541 / SAP403721
		-X2	BADL	8	ABB	Entrelec	34 72593 994087 / SAP403711
		-X2	D2.5/5.P.A00	6	ABB	Entrelec	34 72593 990308 / SAP403683
		-X2	FEDAD1	6	ABB	Entrelec	34 72591 993363 / SAP403712
		-X2	UK 10-DREHSI	2	H. Henniksens Eff.	Phoenix	SAP3005109
		-X20	BADL	2	ABB	Entrelec	34 72593 994087 / SAP403711
		-X20	M16/12.P	2	ABB	Entrelec	34 72591 651300 / SAP 351627

Based on: Prepared: 10-07-2006
 Customer: Centraalkommunes Transmissionselskab I/S
 Project: CTR-NYC Understation EU 01 Betjeningstavle
 Title: AAPE LEJO
 Doc. Des.: List of Spare Parts Item Des. =
 Resp. Dept.: ATAP
 Doc. No.: 1KEL0000900056
 Rev. Ind.:
 Lang. en
 Sheet 2
 Cont. 3

