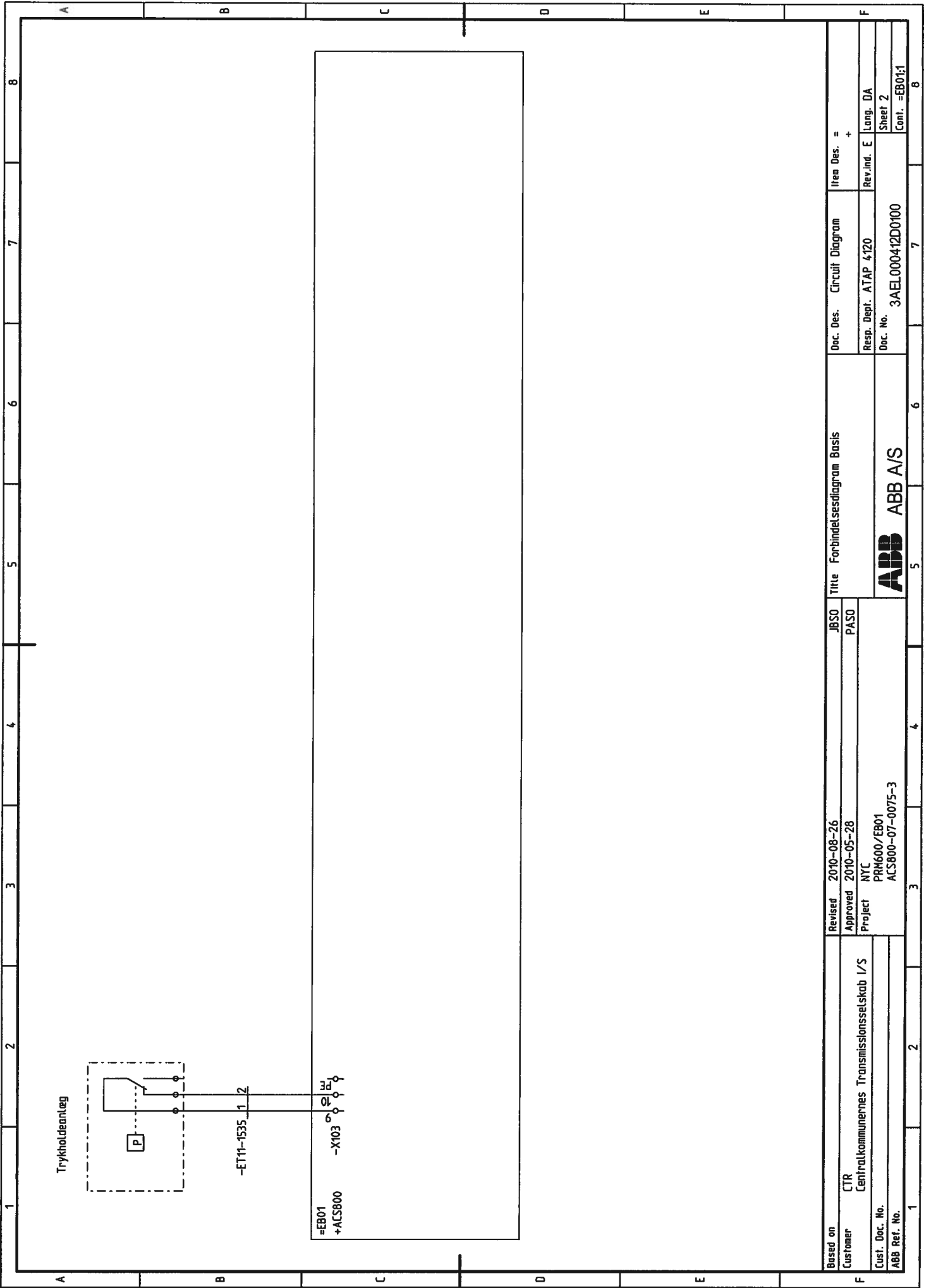


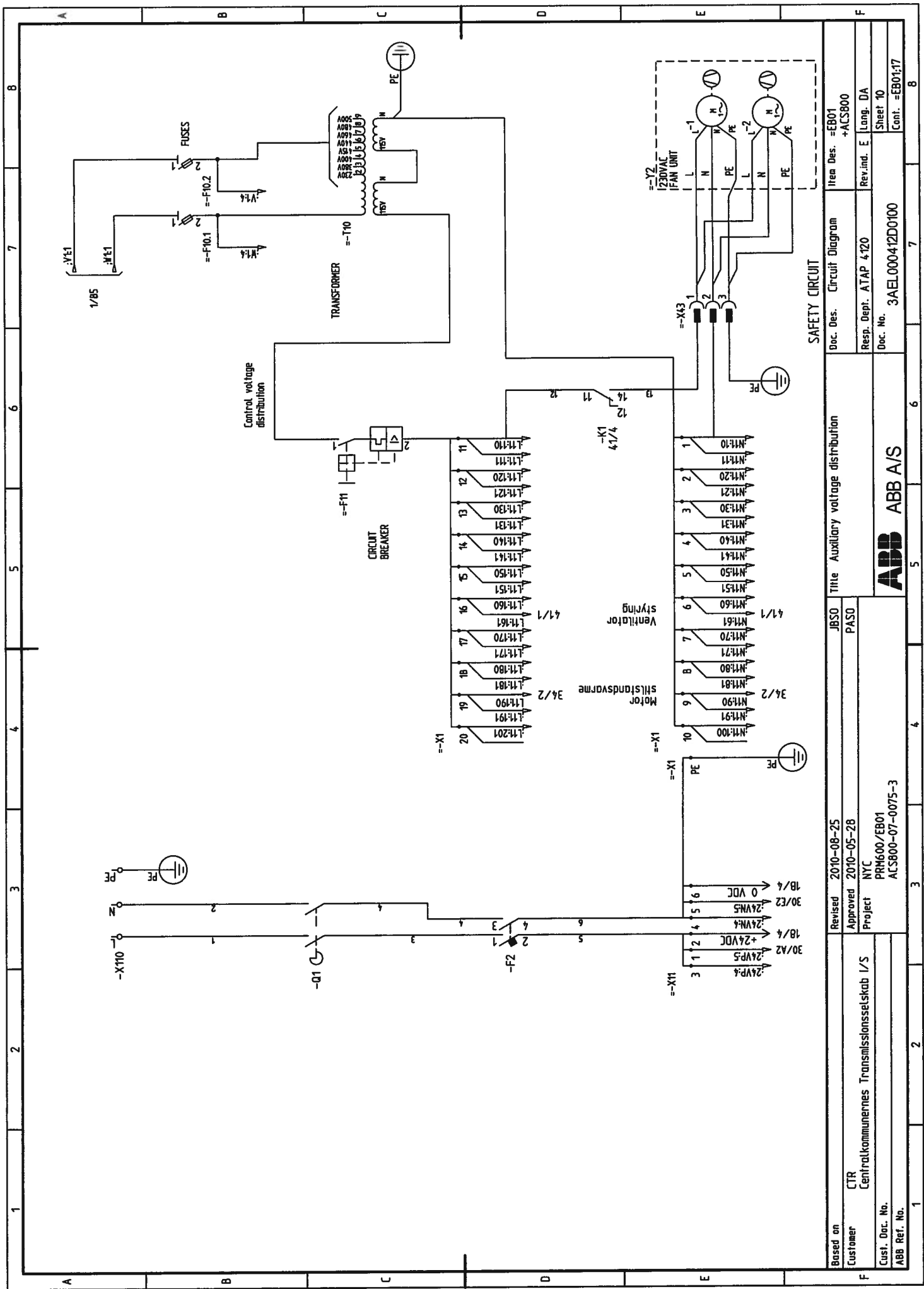
We reserve all rights in this document and in the information contained therein. Reproduction, use or disclosure to third parties without express authority is strictly forbidden. Copyright 2005 ABB

1	2	3	4	5	6	7	8
A	B	C	D	E	F		
Customer	CTR Centralkommernes Transmissionselskab I/S		Title		Forbindelsesdiagram Basis		
Cust. Doc. No.	PRM600/EB01		JBSO		Doc. Des.		
ABB Ref. No.	ACS800-07-0075-3		PASO		Circuit Diagram		
	Project		NYC		Rev.ind.		
	Project		NYC		Lang. DA		
	Project		NYC		Doc. No.		
	Project		NYC		3AEL000412D0100		
	Project		NYC		Sheet 1		
	Project		NYC		Cont. 2		
	Project		NYC		Item Des. = +		
	Project		NYC		3		
	Project		NYC		4		
	Project		NYC		5		
	Project		NYC		6		
	Project		NYC		7		
	Project		NYC		8		





Based on	Revised	JBSO	Title	Doc. Des.	Circuit Diagram	Item Des.
Customer	2010-08-26	PASO	Forbindelsesdiagram Basis			= +
CTR	Approved			Resp. Dept.	ATAP 4120	Rev.ind. E
Centralkommunernes Transmissionselskab I/S	2010-05-28					Lang. DA
	Project	NYC		Doc. No.	3AEL000412D0100	Sheet 2
	PRM600/EB01					Cont. =EB01:1
	ACS800-07-0075-3					
Cust. Doc. No.						
ABB Ref. No.						
			ABB ABB A/S			



Based on	CTR	Doc. No.	3AEL000412D0100
Customer	Centralkommunernes Transmissionselskab I/S	Rev. ind. E	Lang. DA
Project	NYC PRM600/EB01	Item Des.	=EB01
Approved	2010-05-28	Circuit Diagram	+ACS800
Revised	2010-08-25	Doc. Des.	JBSO PASO
ABB Ref. No.	ACS800-07-0075-3	Resp. Dept.	ATAP 4120
Customer Ref. No.	NYC PRM600/EB01	Doc. No.	3AEL000412D0100
Sheet 10		Cont.	=EB01;17



ABB A/S

SAFETY CIRCUIT

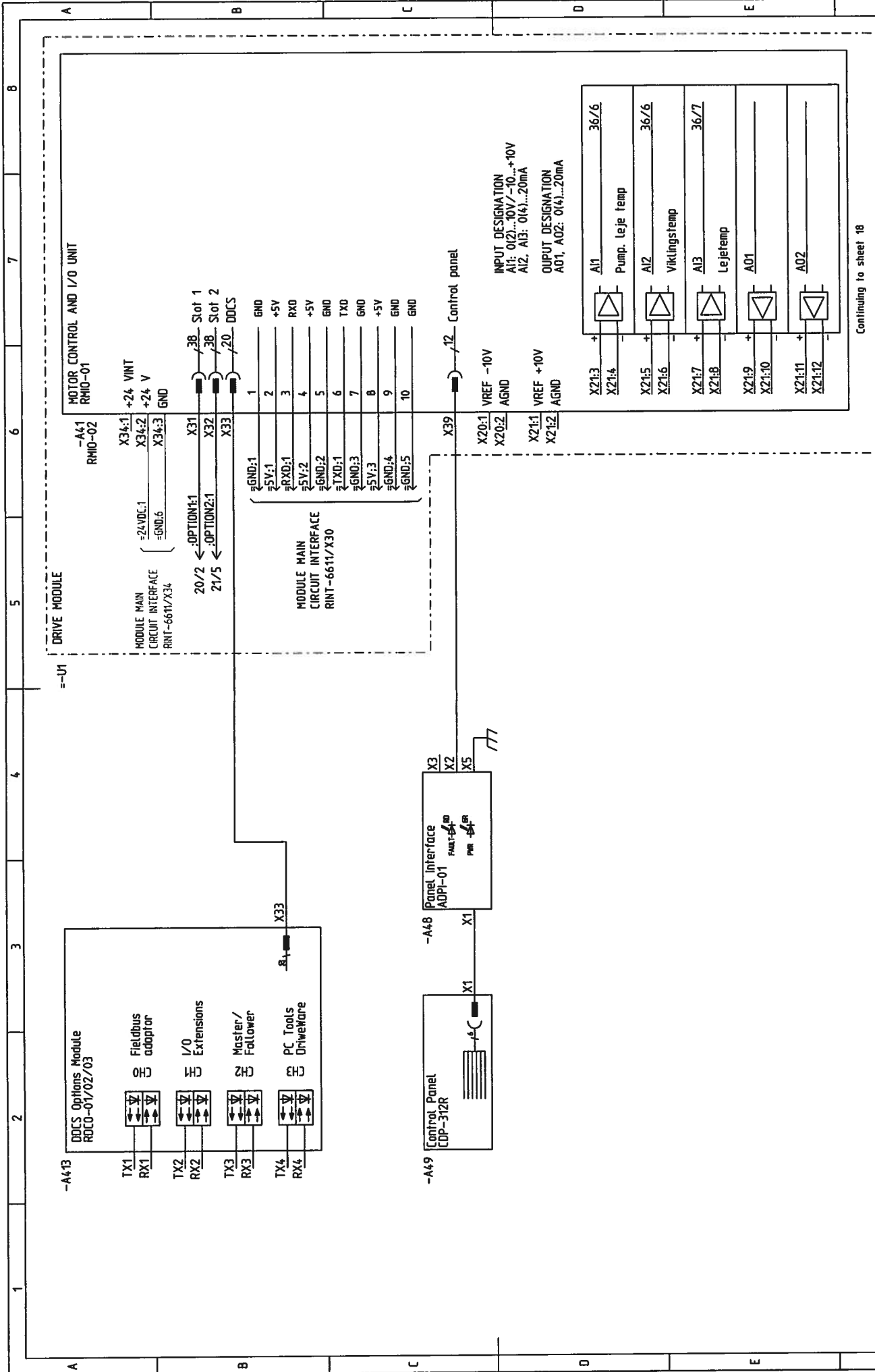
Auxiliary voltage distribution

Doc. No. 3AEL000412D0100

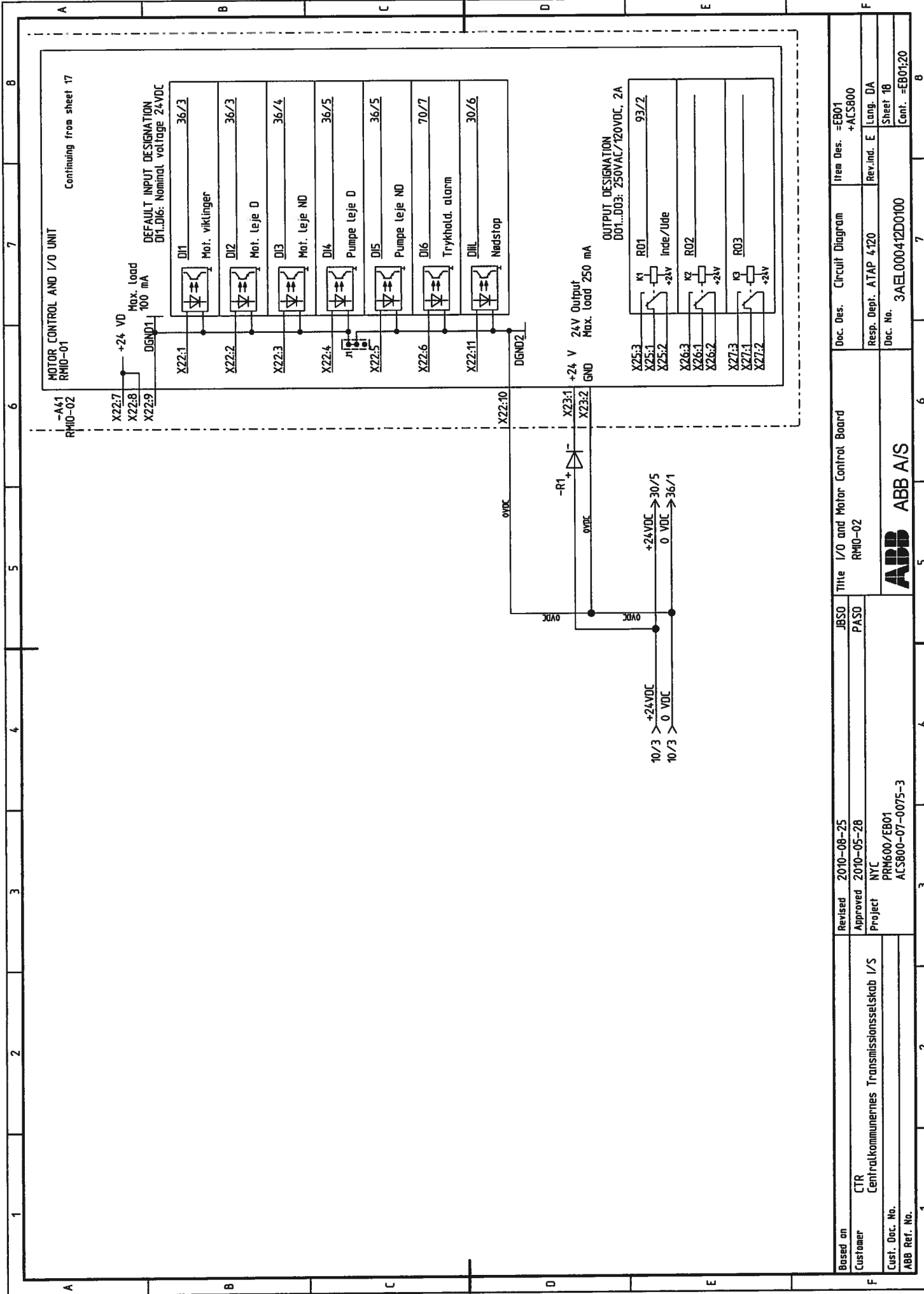
Item Des. =EB01

Rev. ind. E Lang. DA

Cont. =EB01;17



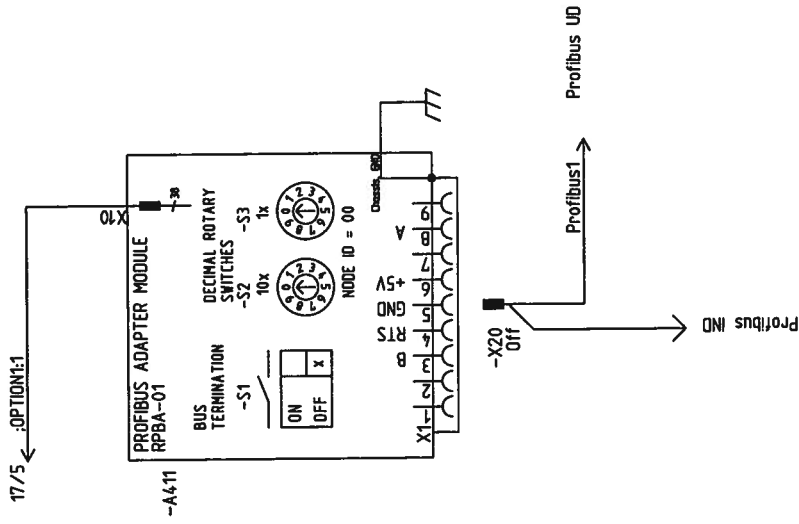
Based on	Revised	2010-08-25	JBSO	Title	I/O and Motor Control Board	Doc. Des.	Circuit Diagram	Item Des.	-EB01
Customer	Approved	2010-05-28	PASO		RMHO-02	Resp. Dept.	ATAP 4120	Rev.ind.	E Lang. DA
	Project	NYC				Doc. No.	3AEL000412D0100		Sheet 17
		PRM600/EB01							Cont. =EB01;18
		ACS800-07-0075-3							



We reserve all rights in this document and in the information contained therein. Reproduction, use or disclosure to third parties without express authority is strictly forbidden. Copyright 2005 ABB

Based on	Customer	Customer	Project	Revised	JBSO	Title	Doc. Des.	Item Des.
CTR	Centralkommunernes Transmissionselskab I/S	NYC	PRM600/EB01	2010-08-25	PASO	RMIO-02	Circuit Diagram	=EB01
Cust. Doc. No.	ABB Ref. No.	Project	ACS800-07-0075-3	Approved			Resp. Dept.	+ACS800
				2010-05-28			ATAP 4120	
							Doc. No.	Rev.ind. E
							3AEL000412D0100	Lang. DA
								Sheet 18
								Cont. =EB01;20



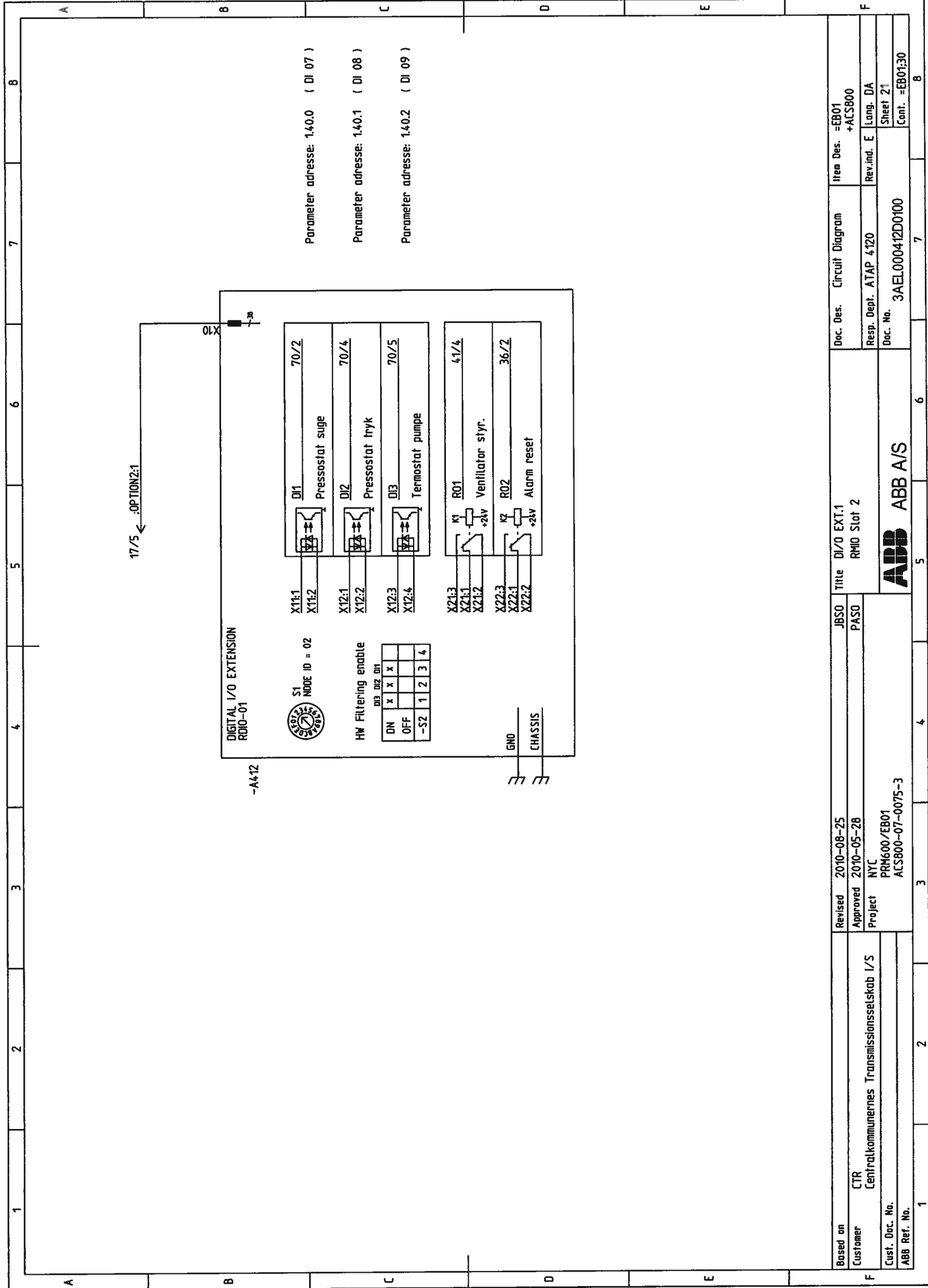


Based on	CTR	Revised	2010-08-25	JBSO	Title	Profibusmodul	Doc. Des.	Circuit Diagram	Item Des.	=EB01
Customer	Centralkommunernes Transmissionselskab I/S	Approved	2010-05-28	PASO	RMO Slot 1		Resp. Dept.	ATAP 4-120	+ACS800	
Cust. Doc. No.		Project	NYC				Lang.	DA	Rev.ind.	E
ABB Ref. No.			PRM600/EB01				Doc. No.	3AEL000412D0100	Sheet	20
			ACS800-07-0075-3						Cont.	=EB01;21



ABB A/S

1	2	3	4	5	6	7	8
A	B	C	D	E	F		

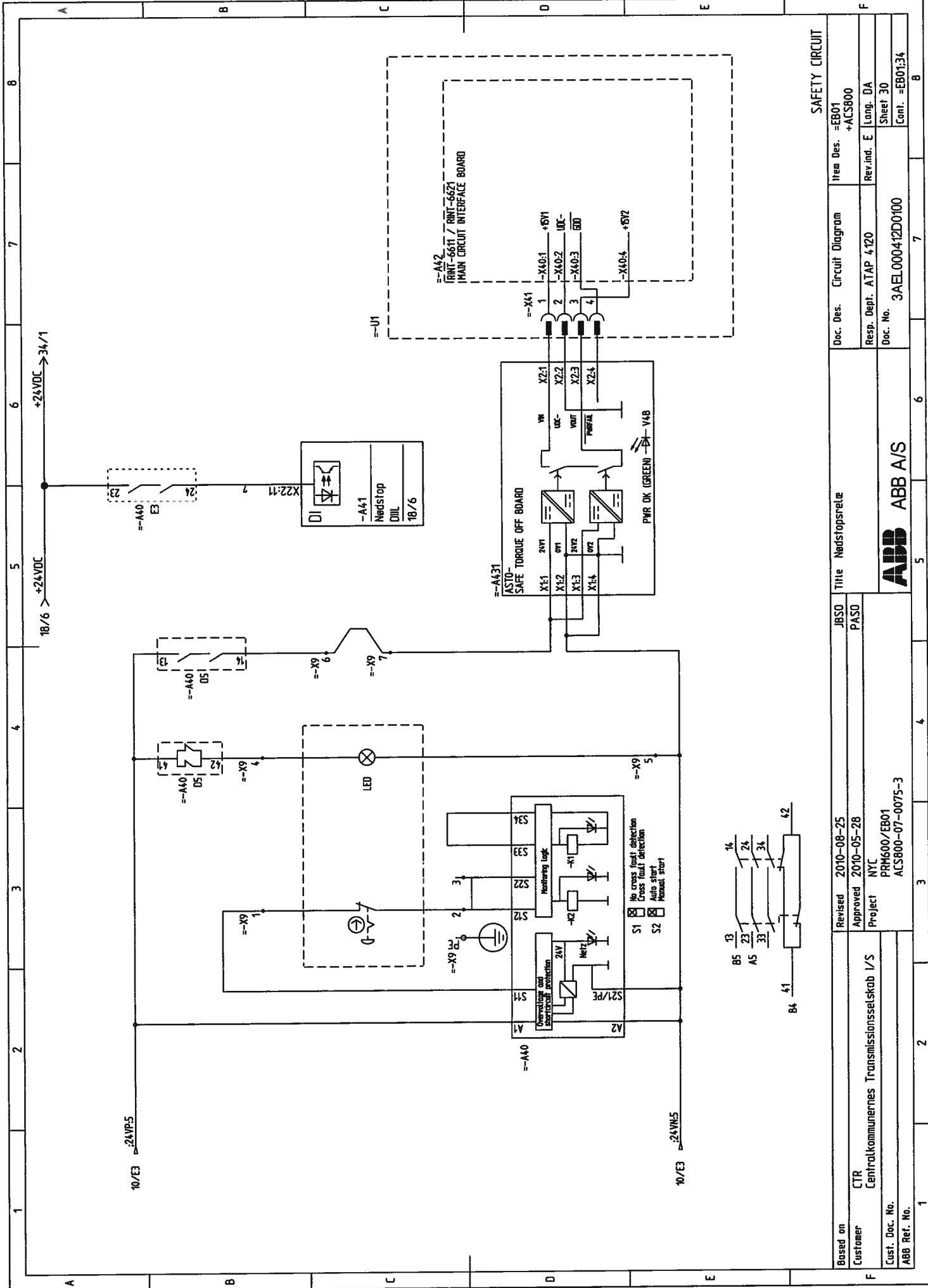


Parameter adresse: 1.40.0 (DI 07)

Parameter adresse: 1.40.1 (DI 08)

Parameter adresse: 1.40.2 (DI 09)

Based on	Revised 2010-08-25	Title	Doc. Des.	Item Des.	8
Customer	JBSO PASO	DI/O EXT.1 RMO Slot 2	Circuit Diagram	=EB01 +AC800	
Customer	NYC PRM600/EB01		Resp. Dept. ATAP 4120	Lang. DA	
Cust. Doc. No.	ACS800-07-0075-3		Doc. No.	3AEL000412D0100	Sheet 21
ABB Ref. No.					Cont. =EB01:30



Doc. Des.	Circuit Diagram	Item Des.	EB01
Doc. No.	3AEL000412D0100	Rev. ind. E	Lang. DA
Doc. No.	3AEL000412D0100	Rev. ind. E	Lang. DA
Doc. No.	3AEL000412D0100	Rev. ind. E	Lang. DA
Doc. No.	3AEL000412D0100	Rev. ind. E	Lang. DA

Doc. Des.	Circuit Diagram	Item Des.	EB01
Doc. No.	3AEL000412D0100	Rev. ind. E	Lang. DA
Doc. No.	3AEL000412D0100	Rev. ind. E	Lang. DA
Doc. No.	3AEL000412D0100	Rev. ind. E	Lang. DA
Doc. No.	3AEL000412D0100	Rev. ind. E	Lang. DA

Doc. Des.	Circuit Diagram	Item Des.	EB01
Doc. No.	3AEL000412D0100	Rev. ind. E	Lang. DA
Doc. No.	3AEL000412D0100	Rev. ind. E	Lang. DA
Doc. No.	3AEL000412D0100	Rev. ind. E	Lang. DA
Doc. No.	3AEL000412D0100	Rev. ind. E	Lang. DA

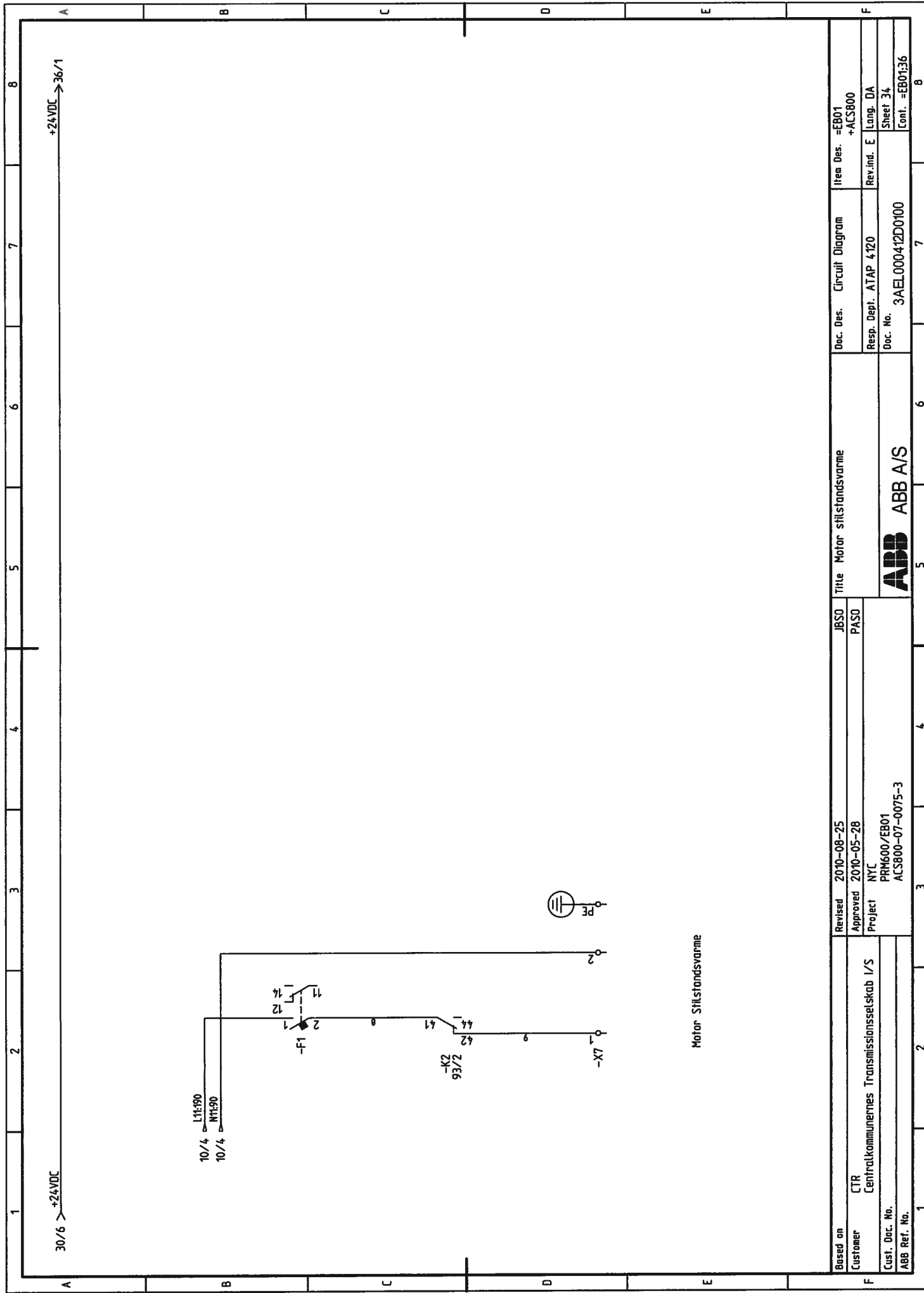
Doc. Des.	Circuit Diagram	Item Des.	EB01
Doc. No.	3AEL000412D0100	Rev. ind. E	Lang. DA
Doc. No.	3AEL000412D0100	Rev. ind. E	Lang. DA
Doc. No.	3AEL000412D0100	Rev. ind. E	Lang. DA
Doc. No.	3AEL000412D0100	Rev. ind. E	Lang. DA

Doc. Des.	Circuit Diagram	Item Des.	EB01
Doc. No.	3AEL000412D0100	Rev. ind. E	Lang. DA
Doc. No.	3AEL000412D0100	Rev. ind. E	Lang. DA
Doc. No.	3AEL000412D0100	Rev. ind. E	Lang. DA
Doc. No.	3AEL000412D0100	Rev. ind. E	Lang. DA

Doc. Des.	Circuit Diagram	Item Des.	EB01
Doc. No.	3AEL000412D0100	Rev. ind. E	Lang. DA
Doc. No.	3AEL000412D0100	Rev. ind. E	Lang. DA
Doc. No.	3AEL000412D0100	Rev. ind. E	Lang. DA
Doc. No.	3AEL000412D0100	Rev. ind. E	Lang. DA

Doc. Des.	Circuit Diagram	Item Des.	EB01
Doc. No.	3AEL000412D0100	Rev. ind. E	Lang. DA
Doc. No.	3AEL000412D0100	Rev. ind. E	Lang. DA
Doc. No.	3AEL000412D0100	Rev. ind. E	Lang. DA
Doc. No.	3AEL000412D0100	Rev. ind. E	Lang. DA

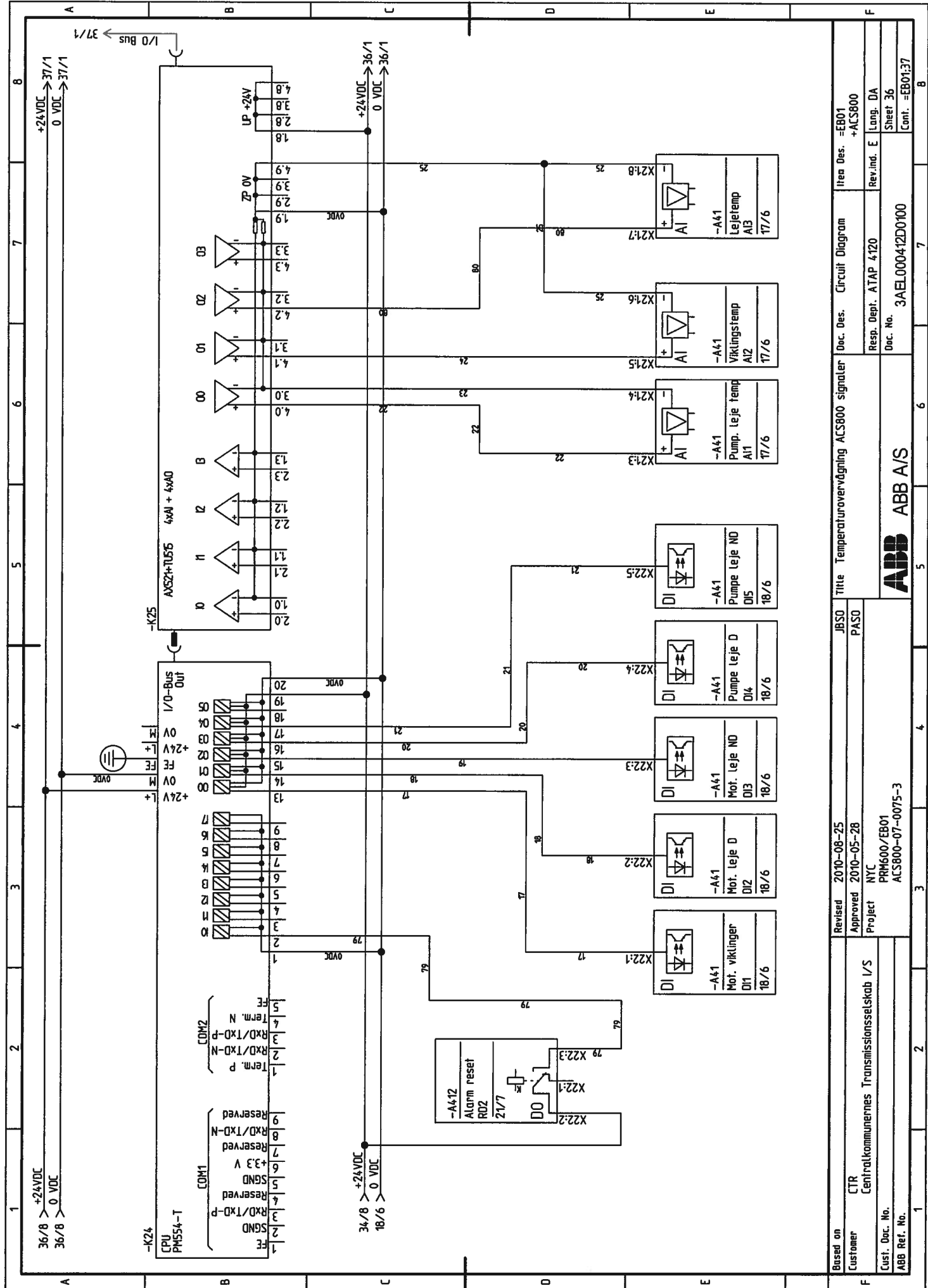
Doc. Des.	Circuit Diagram	Item Des.	EB01
Doc. No.	3AEL000412D0100	Rev. ind. E	Lang. DA
Doc. No.	3AEL000412D0100	Rev. ind. E	Lang. DA
Doc. No.	3AEL000412D0100	Rev. ind. E	Lang. DA
Doc. No.	3AEL000412D0100	Rev. ind. E	Lang. DA



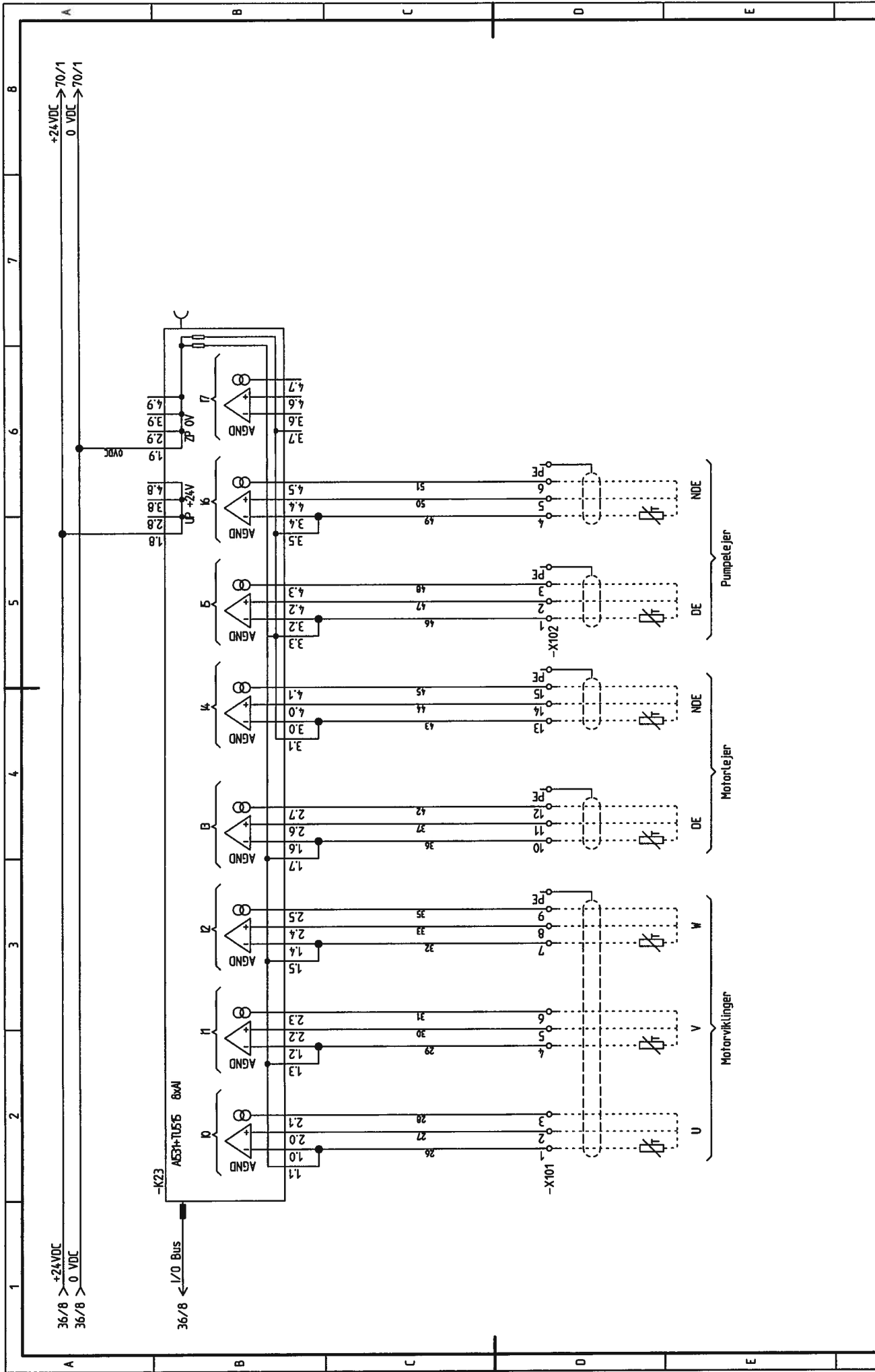
Based on	Customer	CTR Centralkommunernes Transmissionselskab I/S	Revised	2010-08-25	JBSO PASO	Title	Motor Stillstandsvarme	Doc. Des.	Circuit Diagram	Item Des.	=EB01 +ACS800
Cust. Doc. No.	ABB Ref. No.		Approved	2010-05-28				Resp. Dept.	ATAP 4120	Rev.ind.	E
			Project	NYC PRM600/EB01 ACS800-07-0075-3				Doc. No.	3AEL000412D0100	Lang.	DA
										Sheet	34
										Cont.	=EB01:36



ABB A/S

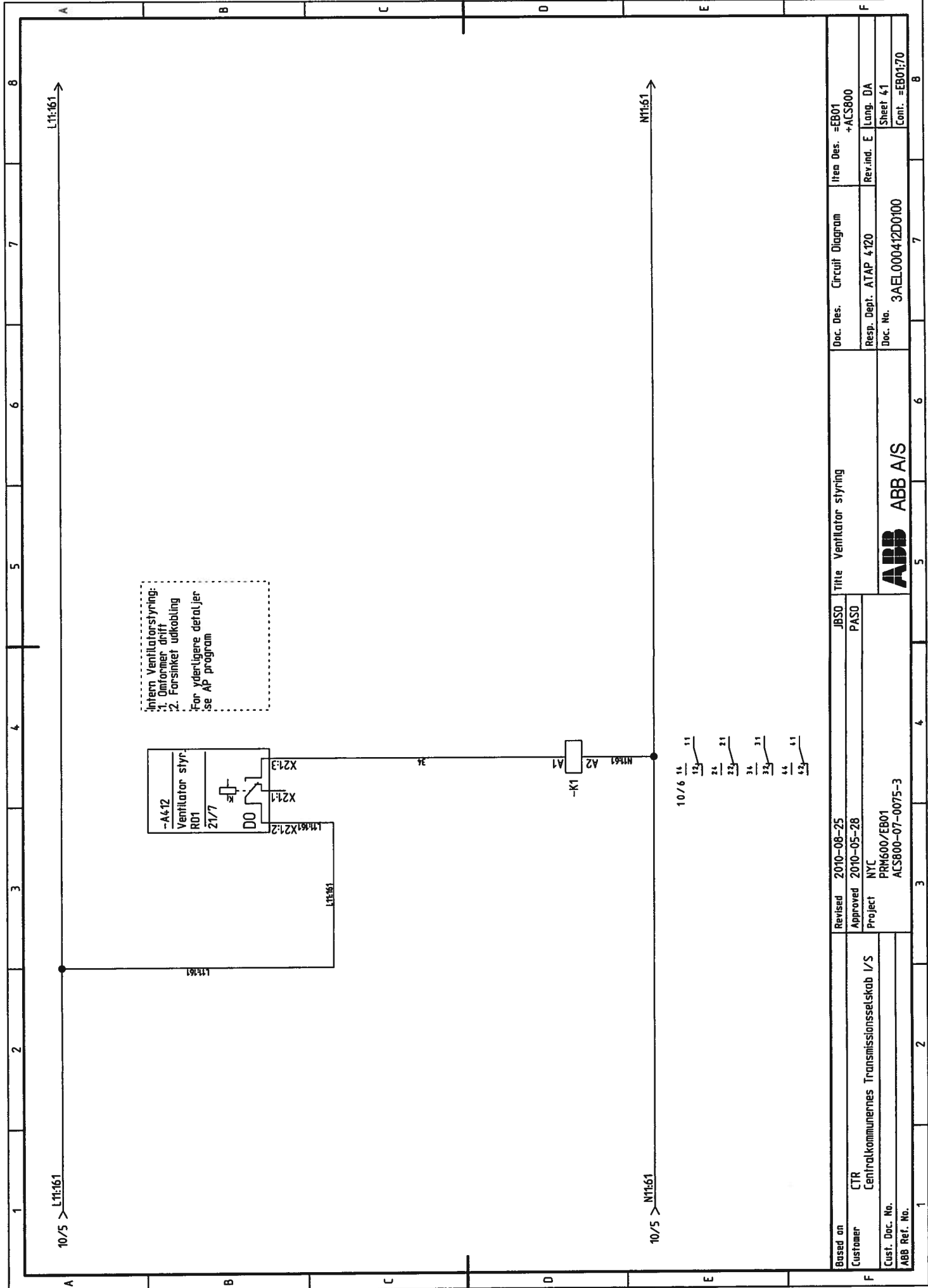


Based on	Revised	Title		Item Des.
Customer	Approved	Temporaturövervakning ACS800 signaler		=EB01 +ACS800
Cust. Doc. No.	Project	Doc. Des.		Rev.ind. E
ABB Ref. No.	NYC	Circuit Diagram		Lang. DA
	PMH600/EB01	Resp. Dept. ATAP 4120		Sheet 36
	ACS800-07-0075-3	Doc. No.		Cont. =EB01:37
		3AEL00041200100		
		ABB ABB A/S		

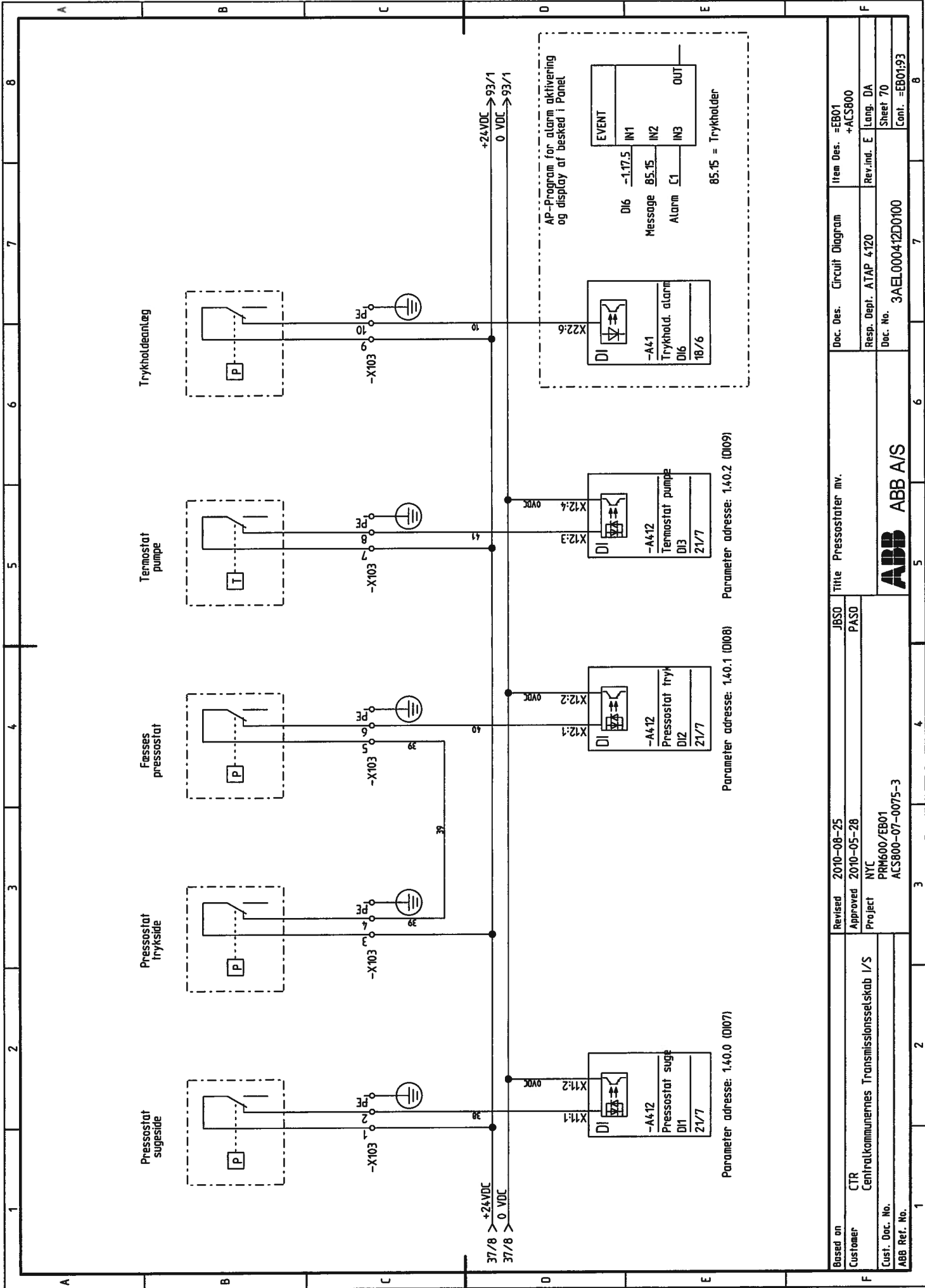


Based on	CTR	Revised	2010-08-25	JBSD	Item Des.	=EB01
Customer	Centralkommunernes Transmissionselskab I/S	Approved	2010-05-28	PASO	Circuit Diagram	+ACS800
Cust. Doc. No.		Project	NYC		Doc. No.	3AEL000412D0100
ABB Ref. No.			PRN600/EB01		Resp. Dept.	ATAP 4120
			ACS800-07-0075-3		Doc. No.	Lang. DA
						Sheet 37
						Cont. = EB01:4:1





Based on	Revised	JBSO	Title	Doc. Des.	Item Des.
Customer	Approved	PASO	Ventilator styring	Circuit Diagram	=EB01 +ACS800
Customer	Project	NYC	ABB ABB A/S	Resp. Dept.	Lang. DA
Customer	Project	PRM600/EB01		ATAP 4:120	Rev.ind. E
Cust. Doc. No.		ACS800-07-0075-3		Doc. No.	3AEL000412D0100
ABB Ref. No.					Cont. =EB01:70



Based on	CTR	JBSO	Time	Pressostater inv.	Doc. Des.	Circuit Diagram	Item Des.	=EB01
Customer	Centralkommunernes Transmissionselskab I/S	PASO			Resp. Dept.	ATAP 4120	Rev. ind.	+ACS800
Cust. Doc. No.		Project	NYC		Doc. No.	3AEL000412D0100	Lang.	DA
ABB Ref. No.							Sheet	70
							Cont.	=EB01:93

Process Data

Bit 5	ACT5.BIT5
Bit 4	ACT5.BIT4
Bit 3	ACT5.BIT3
Bit 2	ACT5.BIT2
Bit 1	ACT5.BIT1
Bit 0	ACT5.BIT0
Bit 5	ACT4.BIT5
Bit 4	ACT4.BIT4
Bit 3	ACT4.BIT3
Bit 2	ACT4.BIT2
Bit 1	ACT4.BIT1
Bit 0	ACT4.BIT0

Status signaler til PLC'en

Adresse	Signal	Skalering
ACT5.BIT5	DI2	0= 1=
ACT5.BIT4	DI1	0= 1=
ACT5.BIT3	DI0 = Start/Stop	0=Stop 1=Start
ACT5.BIT2	DI9 = Termostat pumpe	0=Trip 1=OK
ACT5.BIT1	DI8 = Pressostat tryk	0=Trip 1=OK
ACT5.BIT0	DI7 = Pressostat suge	0=Trip 1=OK
ACT4.BIT5	DI6 = Fejl sfilstandsvarme	0=Trip 1=OK
ACT4.BIT4	DI5 = Pumpe leje ND fejl	0=Trip 1=OK
ACT4.BIT3	DI4 = Pumpe leje D fejl	0=Trip 1=OK
ACT4.BIT2	DI3 = Motor leje ND fejl	0=Trip 1=OK
ACT4.BIT1	DI2 = Motor leje D fejl	0=Trip 1=OK
ACT4.BIT0	DI1 = Motor vikling temp. fejl	0=Alarm 1=OK
ACT3	Motor leje temperatur	0...+20000 ~ 0...+200 °C
ACT2	Motor vikling temperatur	0...+20000 ~ 0...+200 °C
ACT1	Motor hastighed	0 = 0% af motor max. speed +20000 = +100%
SW.BIT13	Nødstop	0 = Aktiveret; 1 = OK
SW.BIT2	RDY-REF	0 = Stoppet; 1 = Startet
SW.BIT3	TRIPPED	0 = Normal; 1 = Tripped
SW	Se note 1	

Parameter adresse: 1.40

Parameter adresse: 1.17

Noter:

- For detaljeret information om SW og yderligere informationer henvises til Softwaremanualen for ACS 800 applikationsprogram samt User's Manual for PROFIBUS-DP Adapter Module RPBA-01

Based on	CTR	Revised	2010-08-25	JBSD	Title	Profibus interface - statussignaler	Doc. Des.	Circuit Diagram	Item Des.	=EB01 +ACS800
Customer	Centrakommunernes Transmissionselskab I/S	Approved	2010-05-28	PASO			Resp. Dept.	ATAP 4120	Rev. Ind.	E Lang. DA
Cust. Doc. No.		Project	NYC				Doc. No.	3AEL000412D0100	Sheet	200
ABB Ref. No.			PRM600/EB01 ACS800-07-0075-3		ABB ABB A/S				Cont.	=EB01;201

Process Data

Kommandosignaler til Frekvensomformereren

Adresse	Signal	Skalering
CW.BH0	OFF 1 Control	Ready toOperate
CW.BH3	Inhibit_Operation	Operation Enabled
CW.BH7	Reset	0->1 = Reset
CW.BH1,2,4,5,6,10	Altid "1"	
CW.BH8,9,11,12,13,14,15	Altid "0"	
REF1	Benyttes ikke	
REF2	Benyttes ikke	
REF3	Benyttes ikke	
REF4	Benyttes ikke	
REF5	Benyttes ikke	

Bit 0
Bit 3
Bit 7
Bit 1,2,4,5,6,10
Bit 8,9,11,12,13,14,15

CW REF1 REF2 REF3 REF4 REF5
Dataset 1 Dataset 3
Kontrolord til ACS 800

Based on	Revised	2010-08-25	_JBSD	Title	Profibus interface - kommandosignaler	Doc. Des.	Circuit Diagram	Item Des.	=EB01 +ACS800
Customer	Approved	2010-05-28	PASO			Resp. Dept.	A.TAP 4/20	Rev.ind.	E Lang. DA
Centralkommunernes Transmissionselskab I/S	Project	NYC				Doc. No.	3AEL000412D0100		Sheet 201
Cust. Doc. No.		PRM600/EB01							Conf. =EB01:311
ABB Ref. No.		ACS800-07-0075-3							



ABB A/S

Marking of conductors

This customized equipment is based on standard products from global ABB feeder factories. The standard products have been adapted to customer specifications on local workshops. Due to this the conductor marking is based on two principles as detailed below.

A: Original Equipment Manufacturing standard from ABB Feeder Factory.

Conductors in the standard products are marked with pin numbers either printed on the conductor insulation or marked by an equivalent method. The conductor colours are:

Colour	Code	Wire numbers	Function
Black	BK	Yes	AC and DC power conductors 1- or 3-phase
Light blue	BU	No	Neutral
Green-and-yellow	GNYE	No	Protective earth

B: Local manufacturing standard used for customizing.

Add-ons to standard units due to customizing are clearly indicated by use of separate conductor colours according to the table below.

Conductors are marked with wire numbers according to the numbers in the wiring diagram. AC and DC supply conductors are identified only by their colours.

See the examples of conductor colours and marking in 230 VAC and 24 VDC circuits on the right side.

Colour	Code	Wire numbers	Function
Black	BK	Yes	AC and DC power conductors 1- or 3-phase
Light blue	BU	No	Neutral
Green-and-yellow	GNYE	No	Protective earth
Red	RD	No / Yes #1	AC Phase control conductor before fuse
Red w. white ribbon	RD/WH	No / Yes #1	AC Phase control conductor after fuse
Red	RD	Yes	AC intermediate control voltage connections
Grey	GY	No	AC Neutral control conductor
Blue	BU	No / Yes #1	DC + control voltage before fuse
Blue w. white ribbon	BU/WH	No / Yes #1	DC + control voltage after fuse
Blue	BU	Yes	DC intermediate control voltage connections
White	WH	No	DC - control voltage
Orange	OG		Interlock control circuits with external source
Green-and-yellow	GNYE		Protective earth

*1: Yes in case of different control voltages

ABB CR-M2LS relay mounting socket pin-out

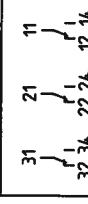
41		11
44		14
42		12



A2	A2	A1
----	----	----

ABB CR-H3LS relay mounting socket pin-out

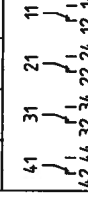
31	21	11
34	24	14
32	22	12



A2	A2	A1
----	----	----

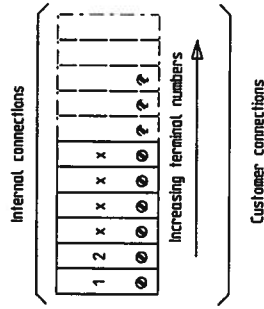
ABB CR-M4LS mounting socket pin-out

41	31	21	11
44	34	24	14
42	32	22	12



A2	A2	A1
----	----	----

Terminal row layout



All parts and connections drawn with a dashed line or inside a dashed box are installations to be made by the Client

Doc. Des.	Circuit Diagram	Item Des.	=EB01 +ACS800
Resp. Dept.	ATAP 4-T20	Rev.ind.	E Lang. DA
Doc. No.	3AEL000412D0100	Sheet	400
			Cont.



ABB A/S

List of Products

Function (=)	Location (+)	Productt (-)	Type	Description	Manufacture	Sheet	Path
=EB01	+ACS800		RPBA-01	Profibus Adapter Module	ABB	1	8
=EB01	+ACS800	-A41	RMIO-02 (in Frequency Converter)			18	6
=EB01	+ACS800	-A41	RMIO-02 (in Frequency Converter)			17	6
=EB01	+ACS800	-A48	ADPI-01	Diagnostic and panel interface	ABB	17	4
=EB01	+ACS800	-A49	CDP-312R	Frequency converter Control Panel	ABB	17	3
=EB01	+ACS800	-A411	RPBA-01	Profibus Adapter Module	ABB	20	3
=EB01	+ACS800	-A412	RDIO-01	Digital I/O Adapter Module	ABB	21	7
=EB01	+ACS800	-A413	RDCO-01	DDCS Communication Options Module 10/5/10/10 Mbit	ABB	17	2
=EB01	+ACS800	-F1	S 201-C 2 w. 1 c/o	Automatic Circuit breaker, 1 pol.2A + 1 pc c/o	ABB	34	2
=EB01	+ACS800	-F2	S 202-C 2	Automatic Circuit breaker, 2 pol.2A	ABB	10	3
=EB01	+ACS800	-K1	CR-M230AC4L Complete	Pluggable miniature relay 230VAC w.LED, 4c/o 250V 6A	ABB	41	4
=EB01	+ACS800	-K2	CR-M024DC4L Complete	Pluggable miniature relay 24VDC w.LED, 4c/o 250V 6A	ABB	93	2
=EB01	+ACS800	-K23	A1531	ACS500 Analog I/O, 8 AI multilevel	ABB	37	2
=EB01	+ACS800	-K24	PM554-T	ACS500 CPU, 128 kB, B DI, 6 DO	ABB	36	3
=EB01	+ACS800	-K25	AX521	ACS500 Analog I/O, 4 AI/4AO	ABB	36	5
=EB01	+ACS800	-Q1	OA1-610	Diode min 3 A 24 VDC	RS Component	10	3
=EB01	+ACS800	-R1	1N5408	Isolating transformer 230- -- 500 V, 3.5A, 50/60 Hz	Noratel	18	6
=EB01	+ACS800	-T10	BT1RA5500	Profibus Sub-D Male 9 pol. screw clamps, angled 90	Siemens	10	7
=EB01	+ACS800	-X20:1	6ES7 972-0BA12-0XA0			20	3

List of Parts

Total	Type	Supplier	Description	EAN 13 / Order No.	Manufacture	
0.00	10x1 01flex m. skærm					
0.00	3x1 01flex m. skærm					
0.00	3x1S 01flex m. skærm					
0.00	3x120+60 NOSP-CU					
0.00	3x50+35 NOSP-CU					
1.00	0A1-G10					
1.00	RM10-02 (in Frequency Converter)					
1.00	ADPI-01	ABB	Diagnostic and panel interface	64532588	ABB	
1.00	A1S31	ABB	ACS500 Analog I/O, 8 AI multilevel	4016779649131	ABB	
1.00	AXS21	ABB	ACS500 Analog I/O, 4 AI/4AO	4016779655958	ABB	
6.00	BADL	ABB	End stop, screwless, 9 mm	34 72593 994087 / SAP403711	Entrelec	
1.00	CDP-312R	ABB	Frequency converter Control Panel	ABB	ABB	
1.00	CR-M024DC4L	ABB	Pluggable miniature relay 24VDC w.LED, 4c/o 250V 6A	40 13614 373596	ABB	
1.00	CR-M230AC4L	ABB	Pluggable miniature relay 230VAC w.LED, 4c/o 250V 6A	40 13614 373657	ABB	
2.00	CR-M4SS	ABB	Standard socket for CR-M relay, 4c/o	40 13614 373800	ABB	
2.00	CR-MH	ABB	Holder for CR-M socket	40 13614 373817	ABB	
31.00	D2.5/5.A00	ABB	Terminal block ADO 1mm2 / screw 2.5mm2, Grey	34 72591 995541 / SAP403721	Entrelec	
11.00	D2.5/5.P.A00	ABB	PE Terminal block ADO/screw inlet 2.5mm2, elec. connected to the rail	34 72593 990308 / SAP403683	Entrelec	
2.00	D6/8.A00	ABB	Terminal block ADO 2.5mm2 / screw 6mm2, Grey	34 72591 990423 / SAP 42843	Entrelec	
1.00	D6/8.P.A00	ABB	PE Terminal block ADO 2.5mm2 / screw 6mm2, Yellow-Green	34 72591 991185 / SAP 42844	Entrelec	
3.00	FEDAD1	ABB	End section for D2.5/5 ADO, Grey, 3mm	34 72591 993363 / SAP403712	Entrelec	
1.00	PMS4-T	ABB	ACS500 CPU, 128 kb, 8 DI, 6 DO	4016779649322	ABB	
1.00	RDC0-01	ABB	DDCS Communication Options Module 10/5/10/10 Mbit	ABB	ABB	
1.00	RD10-01	ABB	Digital I/O Adapter Module	ABB	ABB	
2.00	RPBA-01	ABB	Profibus Adapter Module	SAP 352661	ABB	
1.00	S 201-C 2	ABB	Automatic Circuit breaker, 1 pol.2A	40 16779 52332 5	ABB	
1.00	S 202-C 2	ABB	Automatic Circuit breaker, 2 pol.2A	40 16779 52338 7	ABB	
1.00	S2C-H6R	ABB	Auxiliary contact block, 1 c/o contact > Right side mounted	40 16779 56382 6	ABB	
2.00	TU515	ABB	ACS500 I/O Terminal block, screw-type terminals	4016779649223	ABB	
1.00	BTRAS500	Noratel	Isolating transformer 230- - -500 V, 3.5A, 50/60 Hz	BTRAS500	Noratel	
Based on	Prepared 2010-08-25	JBSO	Title	Doc. Des.	List of Parts	Item Des. =
Customer	Approved 2010-05-28	PASO		Resp. Dept.	ATAP 4120	Lang. DA
Cust. Doc. No.	Project	NYC		Doc. No.	3AEL000412D100	Rev.ind. E
ABB Ref. No.	Centralkommunernes Transmissionselskab I/S	PRM600/EB01				Sheet 1
		ACS800-07-0075-3				Cont. 2



ABB A/S

We reserve all rights in this document and in the information contained therein. Reproduction, use or disclosure to third parties without express authority is strictly forbidden. Copyright 2005 ABB

List of Spare Parts

Function (=)	Location (+)	Product (-)	Type	Total	Supplier	Manufacture	EAN 13 / Order No.
=EB01	+ACS800	-A41	RM10-02 (in Frequency Converter)	1			
=EB01	+ACS800	-A48	ADPI-01	1	ABB	ABB	64532588
=EB01	+ACS800	-A49	CDP-312R	1	ABB	ABB	ABB
=EB01	+ACS800	-A411	RPBA-01	1	ABB	ABB	SAP 352661
=EB01	+ACS800	-A412	RD10-01	1	ABB	ABB	ABB
=EB01	+ACS800	-A413	RDCO-01	1	ABB	ABB	ABB
=EB01	+ACS800	-F1	S 201-C 2	1	ABB	ABB	40 16779 52332 5
=EB01	+ACS800	-F1	S2C-H6R	1	ABB	ABB	40 16779 56382 6
=EB01	+ACS800	-F2	S 202-C 2	1	ABB	ABB	40 16779 52338 7
=EB01	+ACS800	-K1	CR-M230AC4L	1	ABB	ABB	40 13614 373657
=EB01	+ACS800	-K1	CR-M4SS	1	ABB	ABB	40 13614 373800
=EB01	+ACS800	-K1	CR-MH	1	ABB	ABB	40 13614 373817
=EB01	+ACS800	-K2	CR-M4SS	1	ABB	ABB	40 13614 373800
=EB01	+ACS800	-K2	CR-M024DC4L	1	ABB	ABB	40 13614 373596
=EB01	+ACS800	-K2	CR-MH	1	ABB	ABB	40 13614 373817
=EB01	+ACS800	-K23	TU515	1	ABB	ABB	4016779649223
=EB01	+ACS800	-K23	AIS31	1	ABB	ABB	4016779649131
=EB01	+ACS800	-K24	PH554-T	1	ABB	ABB	4016779649322
=EB01	+ACS800	-K25	TU515	1	ABB	ABB	4016779649223
=EB01	+ACS800	-K25	AX521	1	ABB	ABB	4016779655958
=EB01	+ACS800	-Q1	0A1-610	1			
=EB01	+ACS800	-R1	M5408	1	RS Component	RS Component	M5408
=EB01	+ACS800	-T10	BTRAS500	1	Noratel	Noratel	BTRAS500
=EB01	+ACS800	-X7	D2.5/5.P.ADD	1	ABB	Entretec	34 72593 990308 / SAP403683
=EB01	+ACS800	-X7	D2.5/5.ADD	2	ABB	Entretec	34 72591 995541 / SAP403721
=EB01	+ACS800	-X7	BADL	1	ABB	Entretec	34 72593 994087 / SAP403711
=EB01	+ACS800	-X9	D2.5/5.P.ADD	1	ABB	Entretec	34 72593 990308 / SAP403683
=EB01	+ACS800	-X20	6ES7 972-0BA12-0XA0	1	Solar	Siemens	40 25515 067078
=EB01	+ACS800	-X101	BADL	1	ABB	Entretec	34 72593 994087 / SAP403711
=EB01	+ACS800	-X101	FEDAD1	1	ABB	Entretec	34 72591 993363 / SAP403712

Based on: Prepared 2010-08-25
 Customer: CTR Centralkommunernes Transmissionselskab I/S
 Approved 2010-05-28
 Project: NYC
 PRM600/EB01
 ACS800-07-0075-3

Doc. Des. List of Spare Parts Item Des. =EB01
 Resp. Dept. ATAP 4120 Rev.ind. E Long. DA
 Doc. No. 3AEL00041200100 Sheet 4
 Cont. =EB01:5



ABB A/S

© Copyright 2005 ABB

